

- -

- ## 实验二 结缔组织 肌肉组织

- 目的

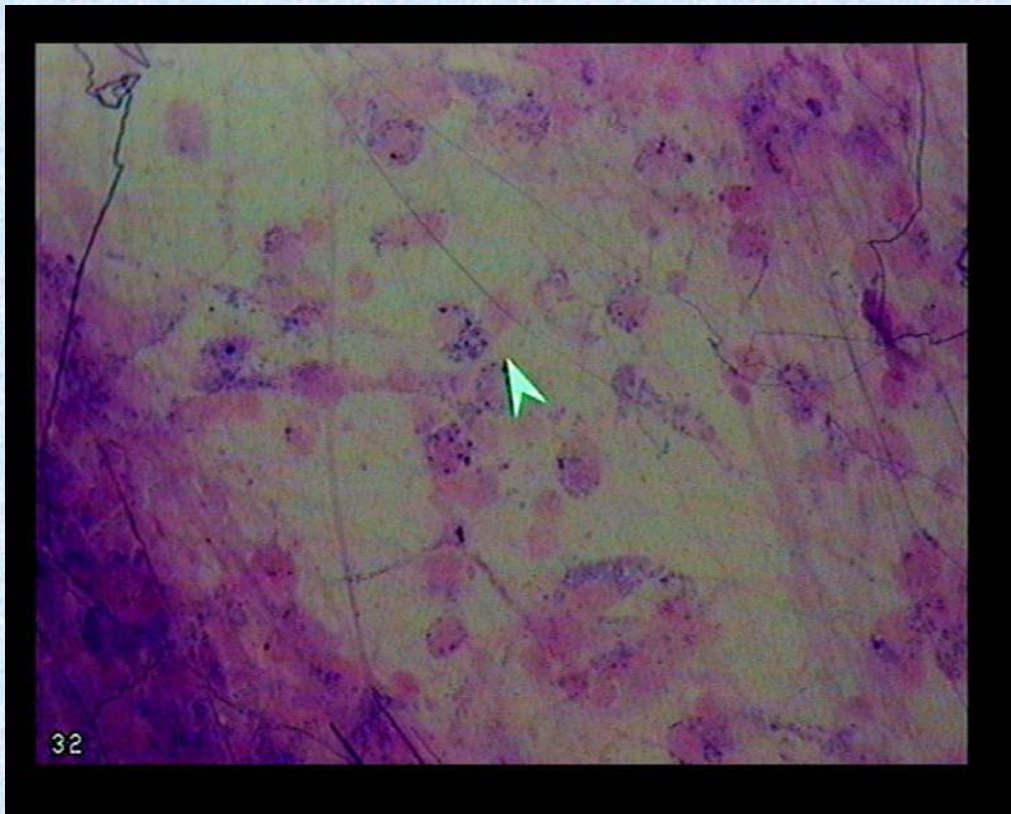
- 1、掌握固有结缔组织的光镜结构
- 2、掌握软骨组织和骨组织光镜结构
- 3、掌握红细胞和各类白细胞光镜形态结构
- 4、掌握三种肌纤维光镜结构特点

- ## 实验内容

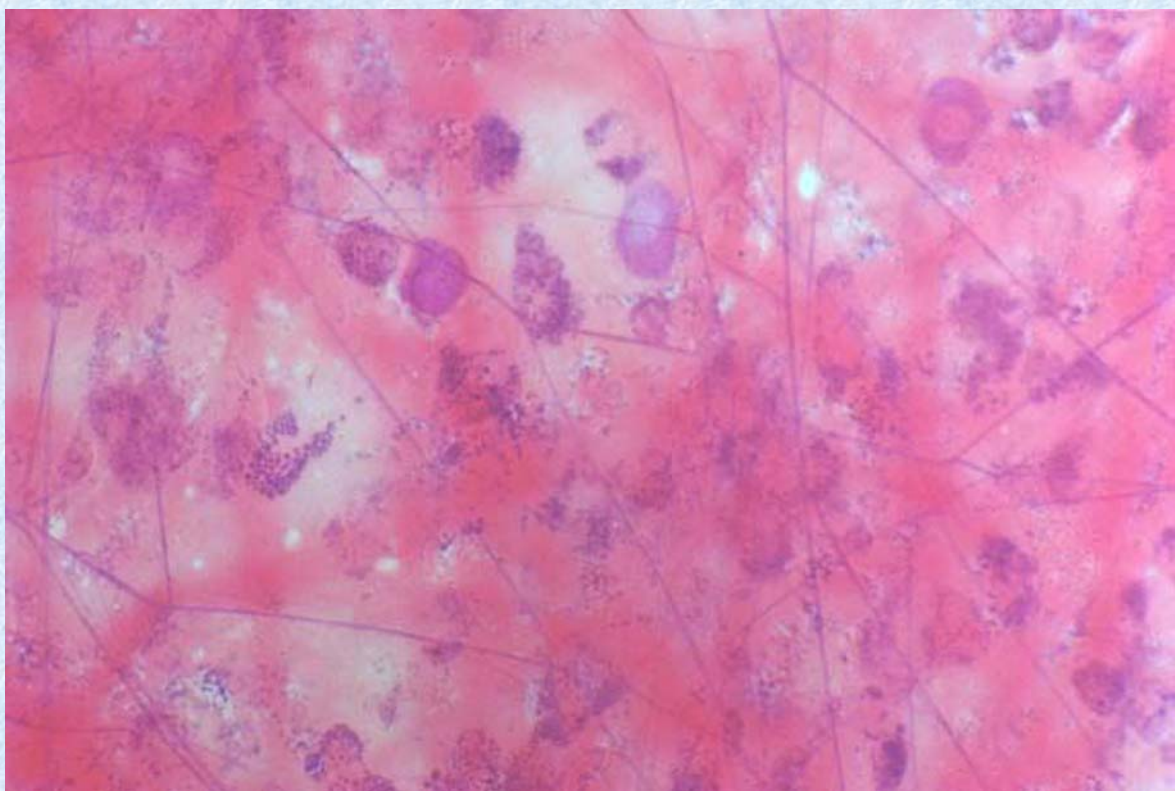
- 1、疏松结缔组织撕片 8#
- 2、脂肪组织 24#
- 3、网状组织 10#
- 4、透明软骨 39#
- 5、弹性软骨 62#
- 6、骨磨片 11 #
- 7、骨骼肌 13 # 63 #
- 8、心肌 14 # 64 #
- 9、平滑肌 12 # 或31 #
- 10、血涂片



# 疏松结缔组织撕片

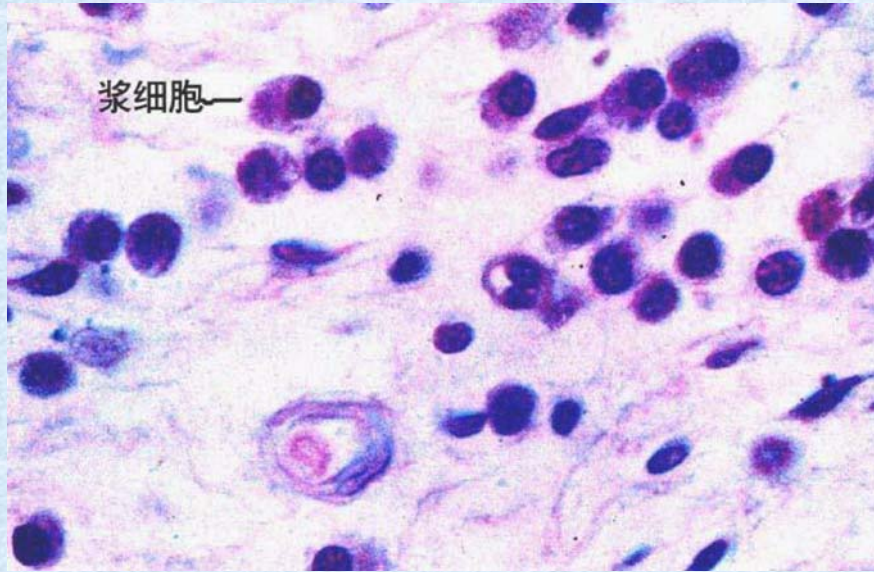


# 疏松结缔组织撕片

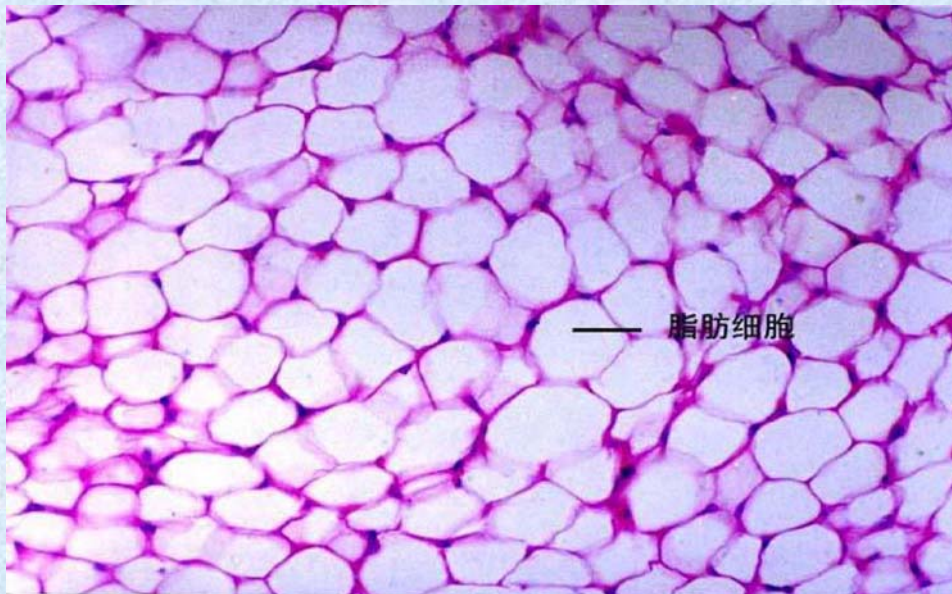




# 浆细胞示教

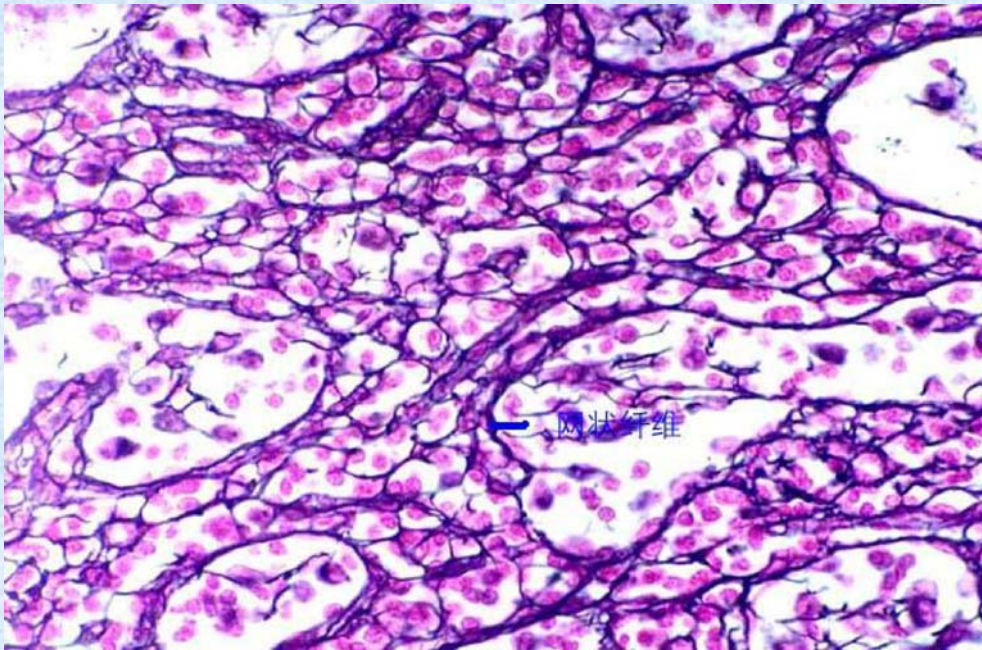


# 脂肪组织





# 网状组织

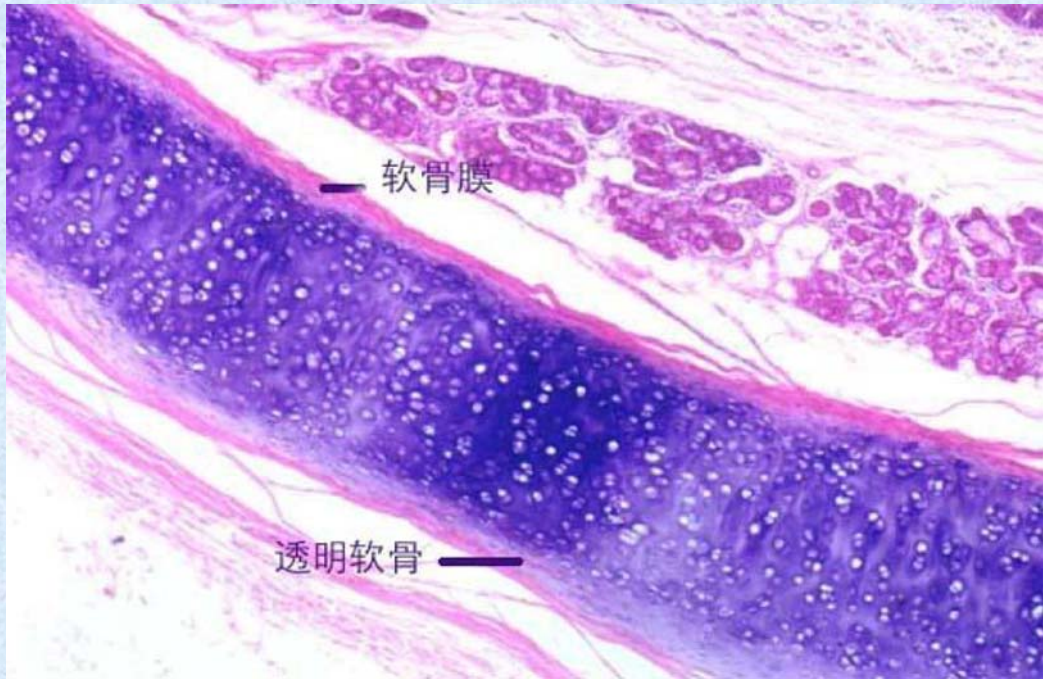


# 胃（胃小凹）

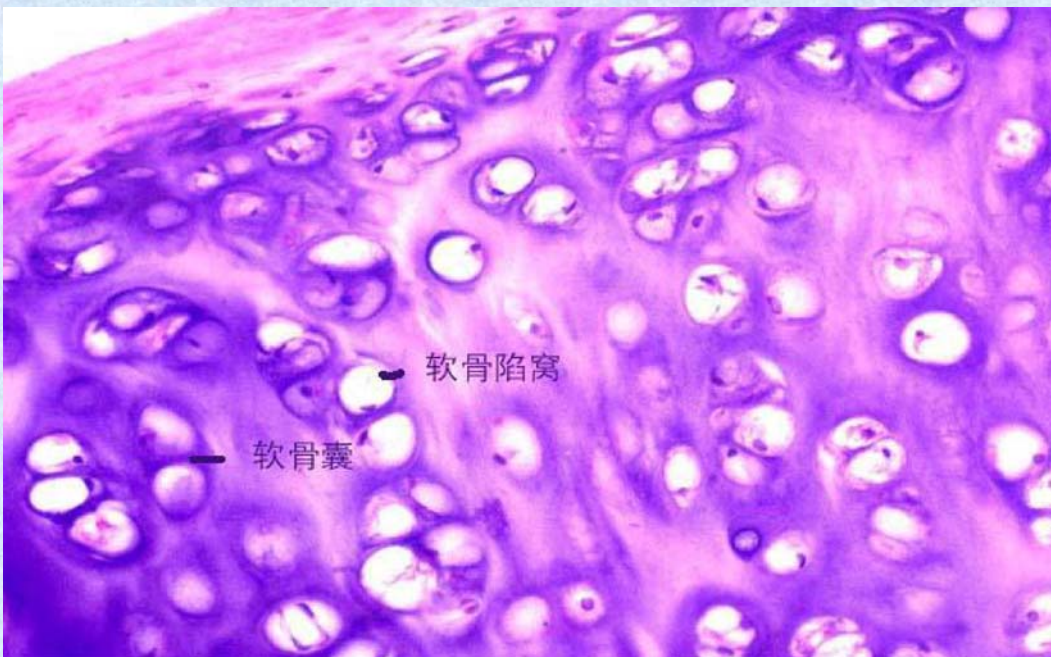




# 透明软骨

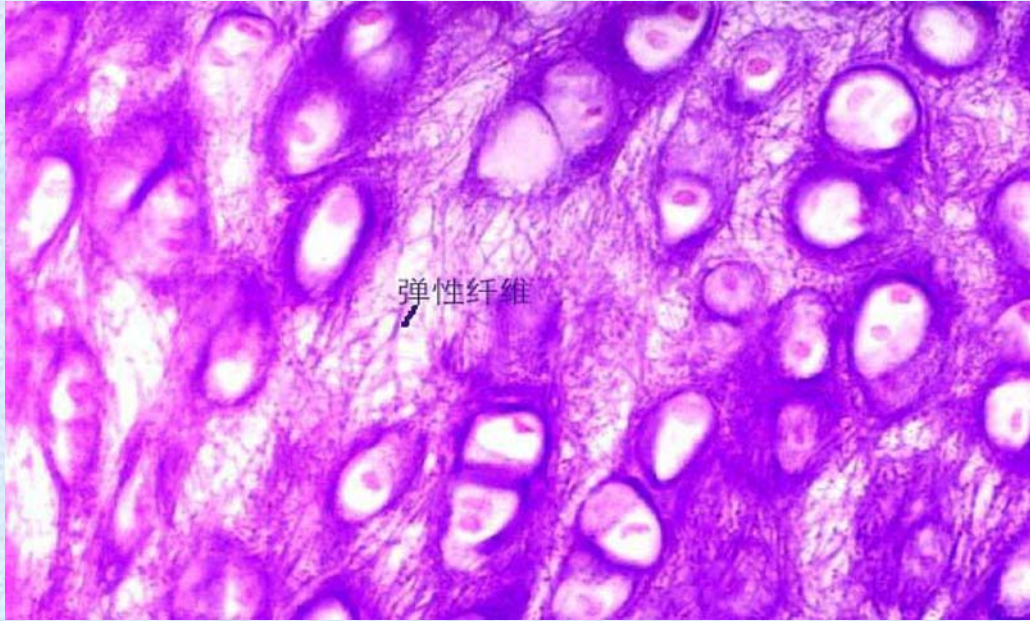


# 透明软骨





# 弹性软骨

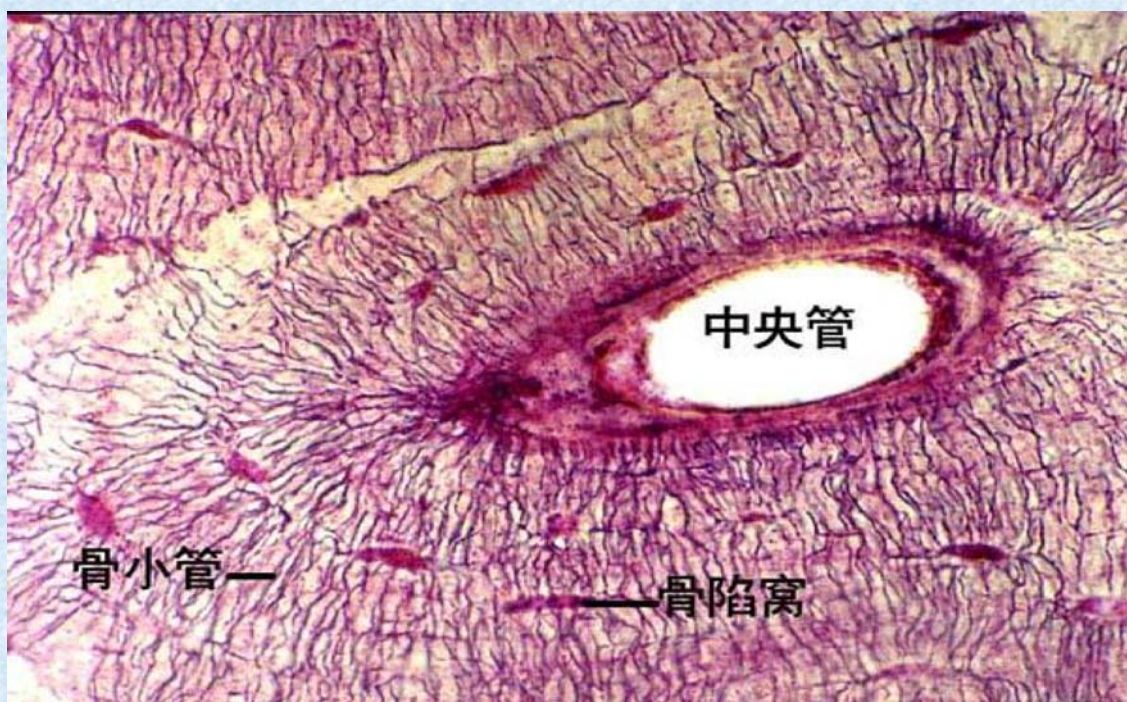


# 骨磨片





# 骨磨片

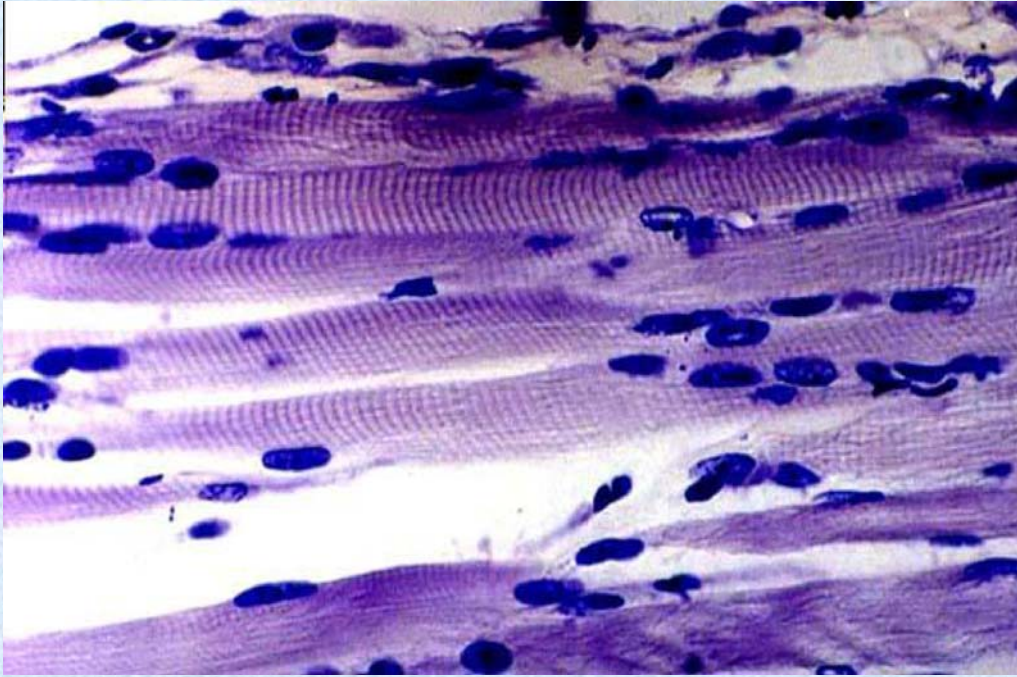


# 骨骼肌

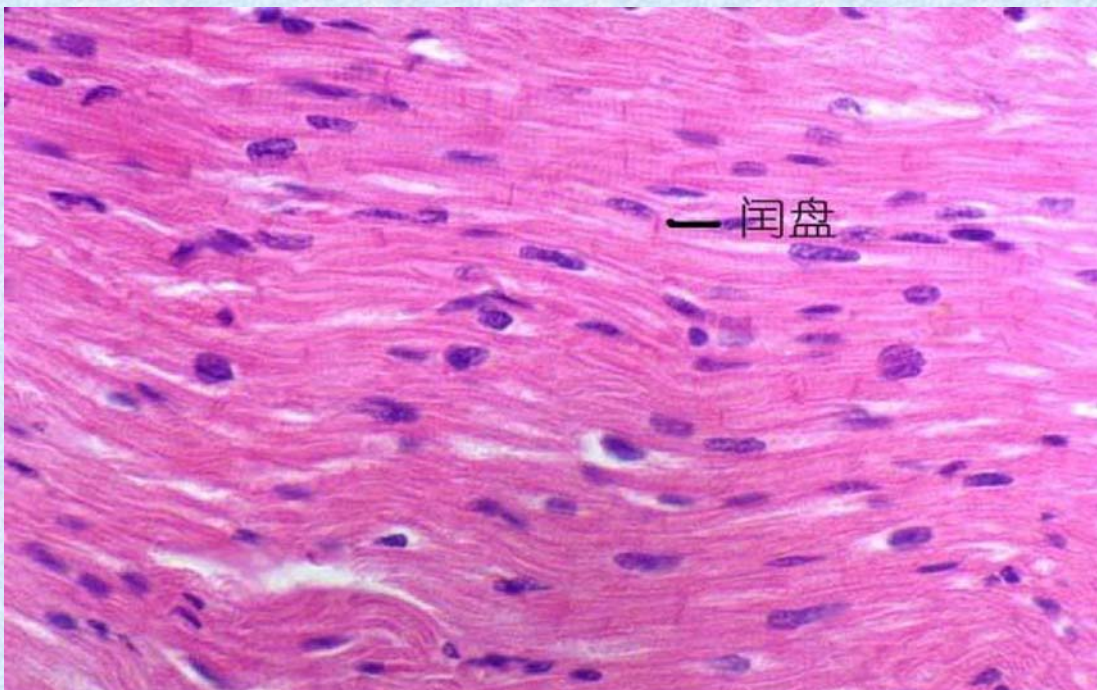




# 骨骼肌

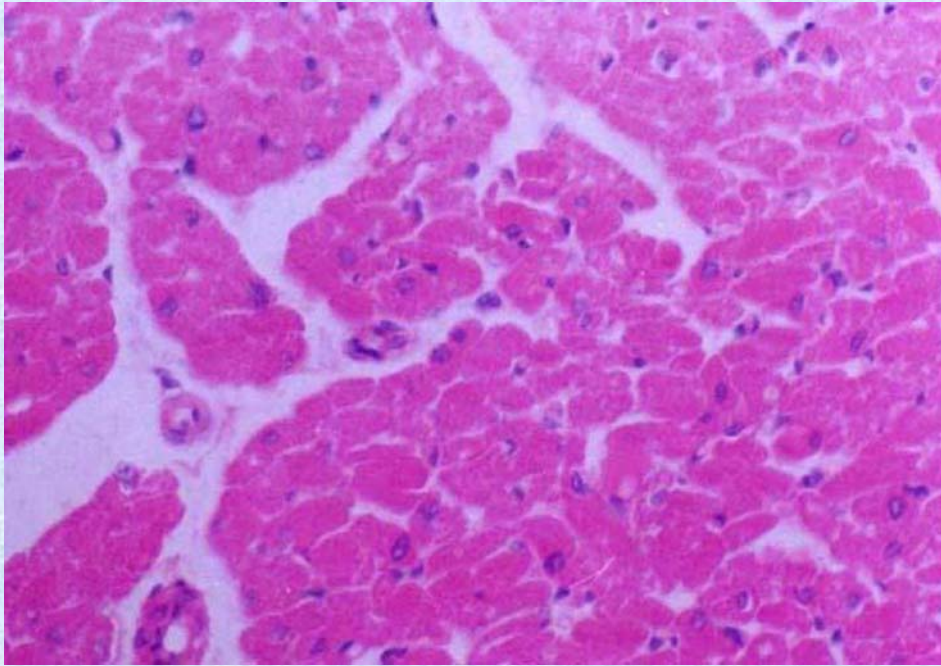


# 心肌

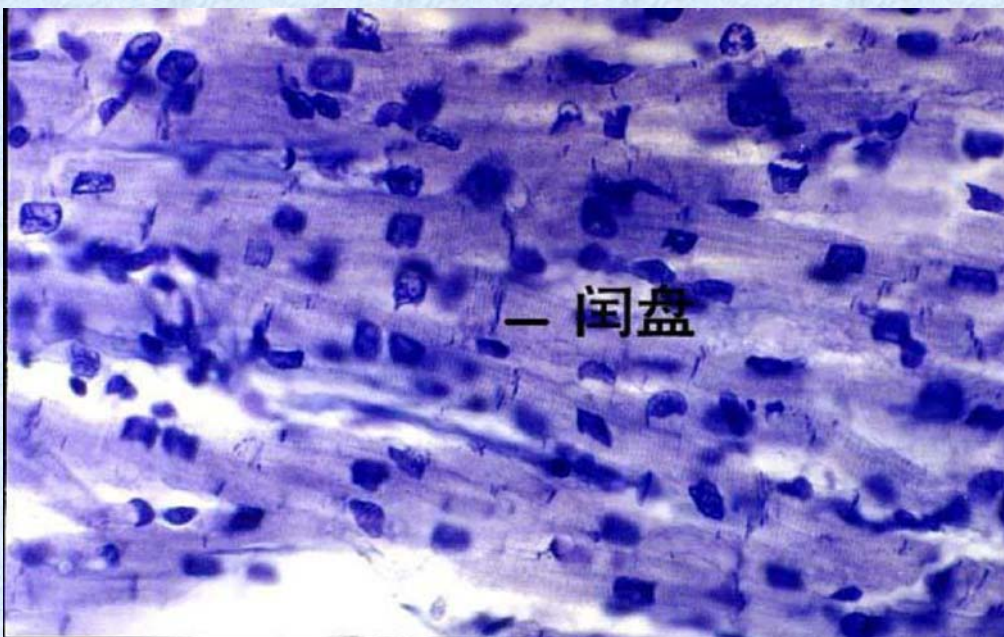




# 心肌

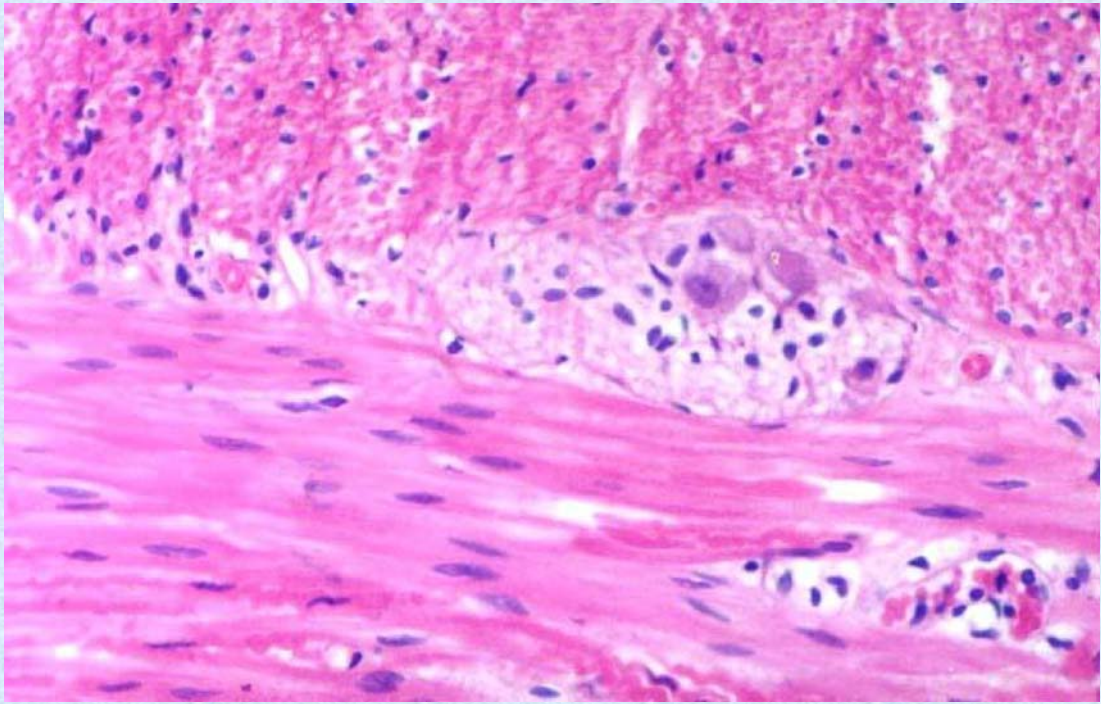


# 心肌

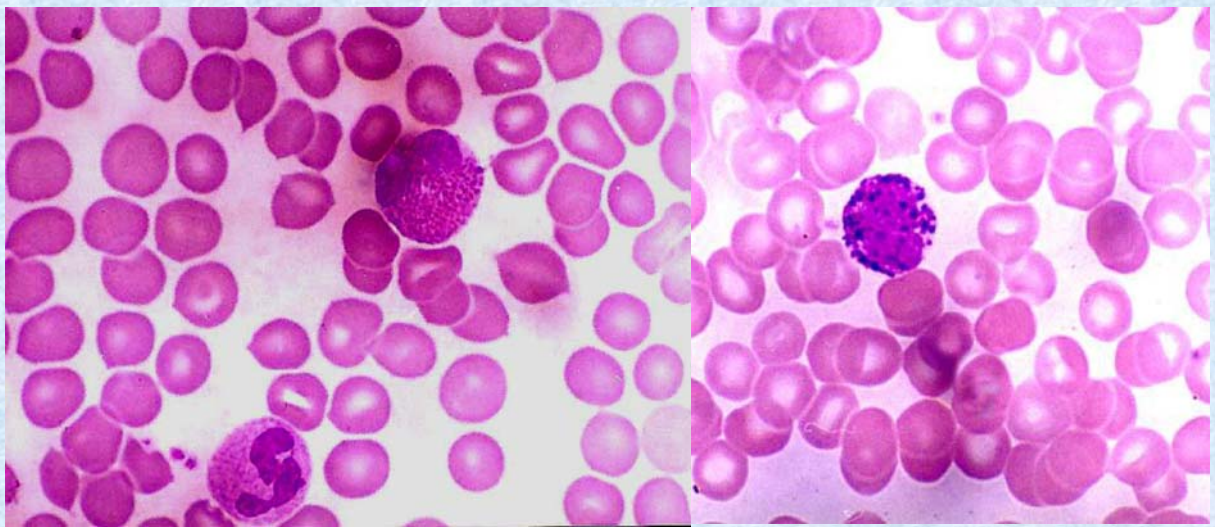




# 平滑肌

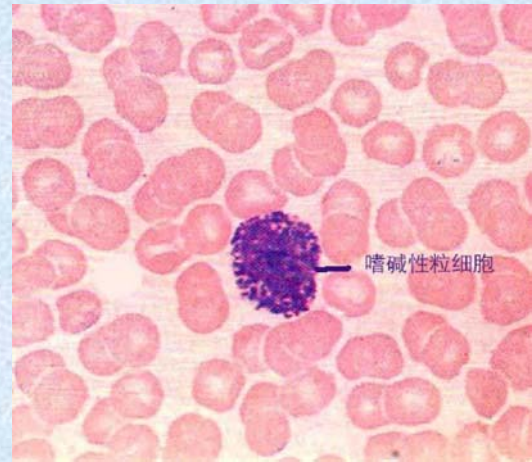
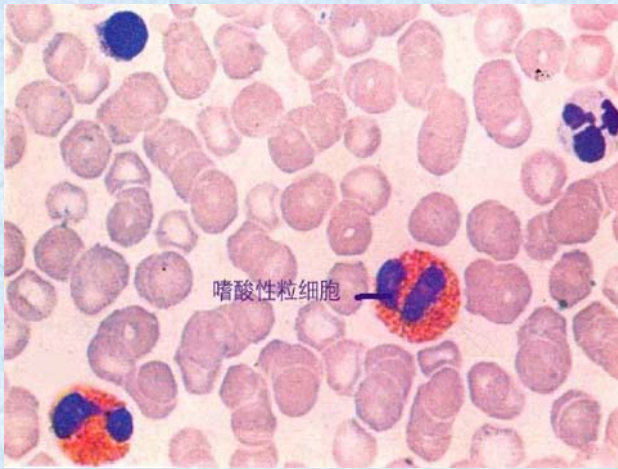


# 血涂片

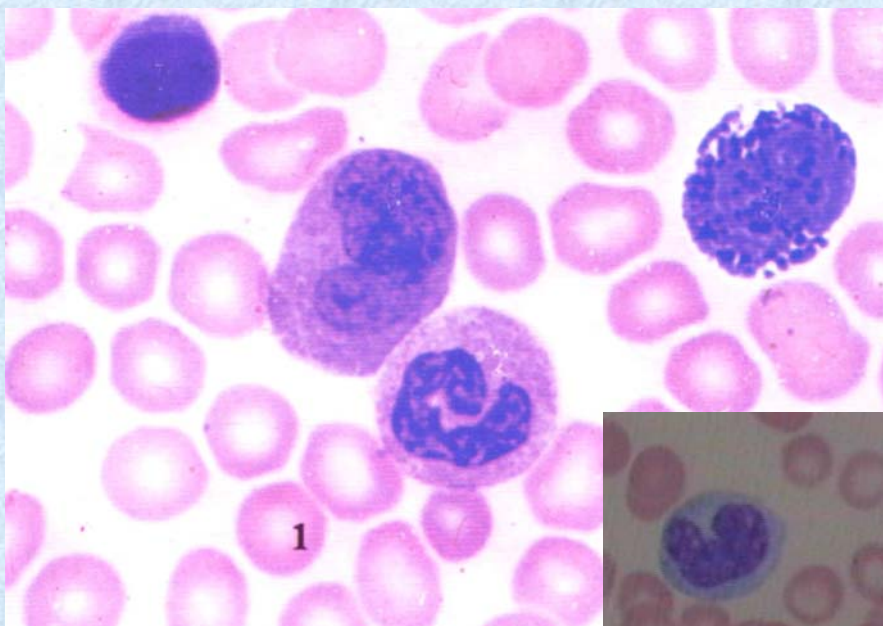




# 血涂片

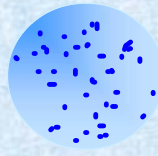


# 血涂片





# 血涂片



瑞氏染色

10×100倍

人外周血