

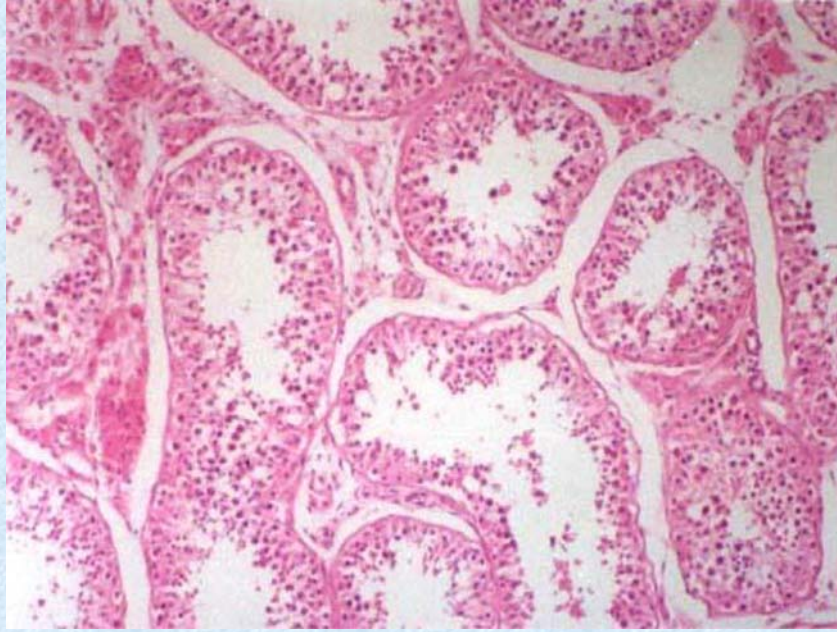
## 实验六 生殖系统

- 目的:
- 1.掌握生精小管组织结构
- 2.掌握各级卵泡结构特点及分泌期  
子宫内膜结构特点
- 3.复习切片

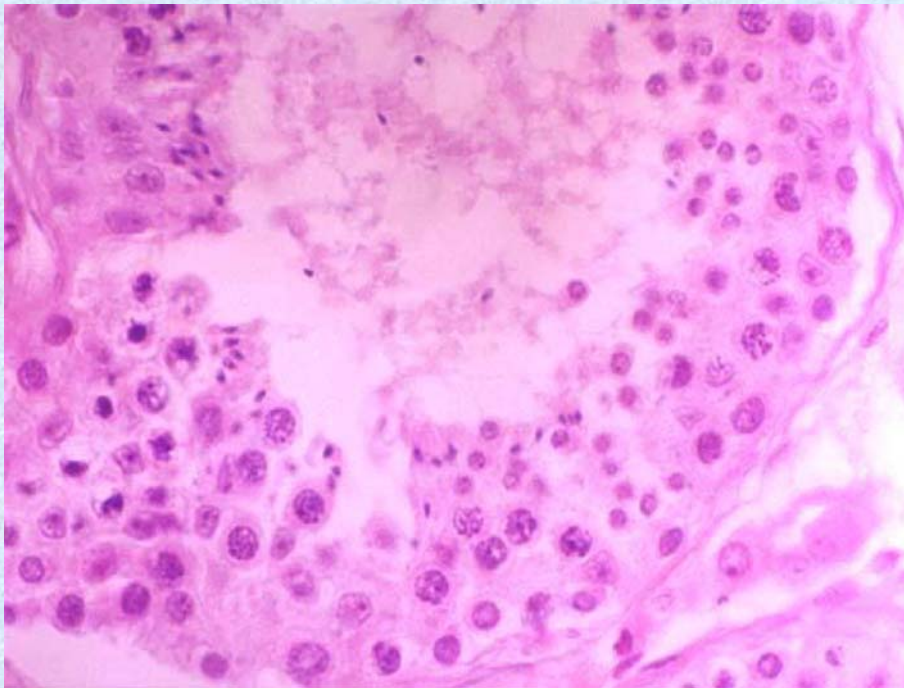
## 实验内容

- 1. 睪丸 47#
- 2. 副睪 48#
- 3. 前列腺 50#
- 4. 卵巢51#
- 5. 子宫(增生期.分泌期) 53# 54#
- 切片复习考试

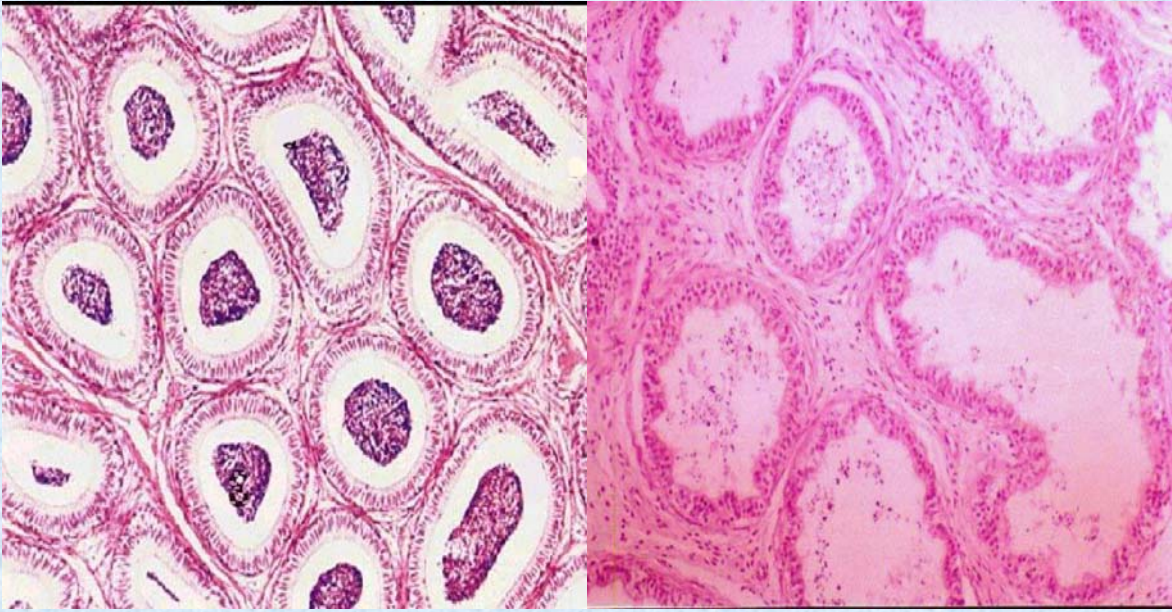
# 睪丸



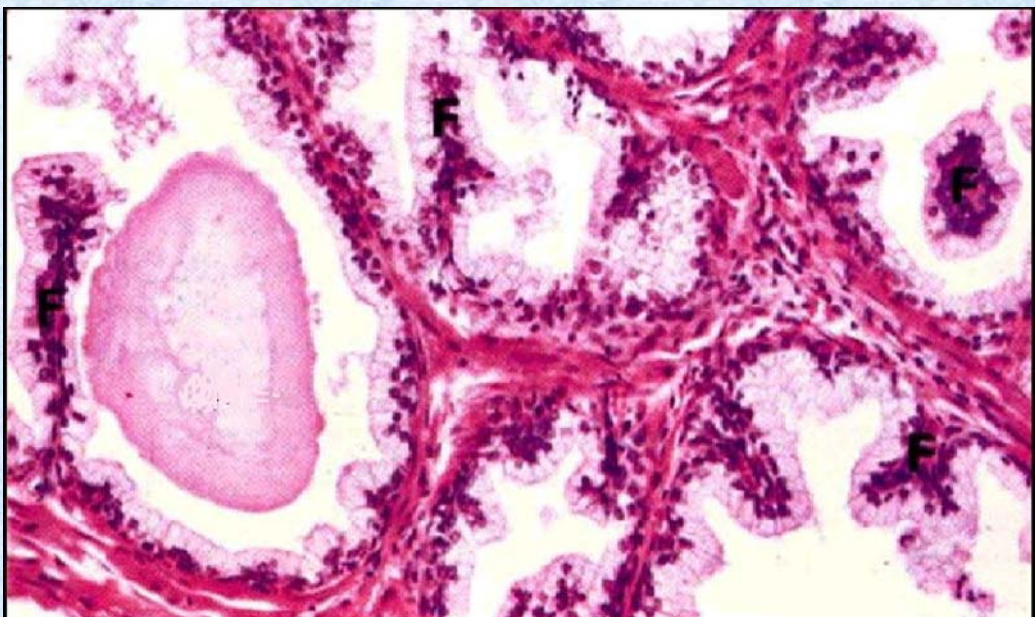
# 睪丸（生精小管）



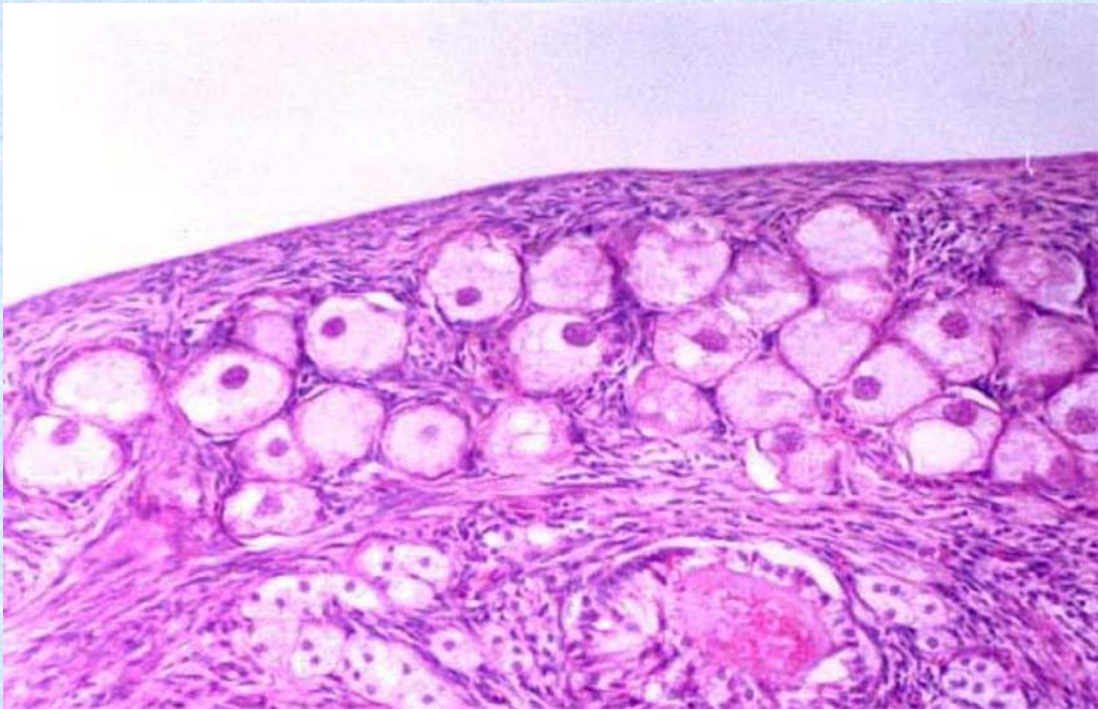
# 副睪



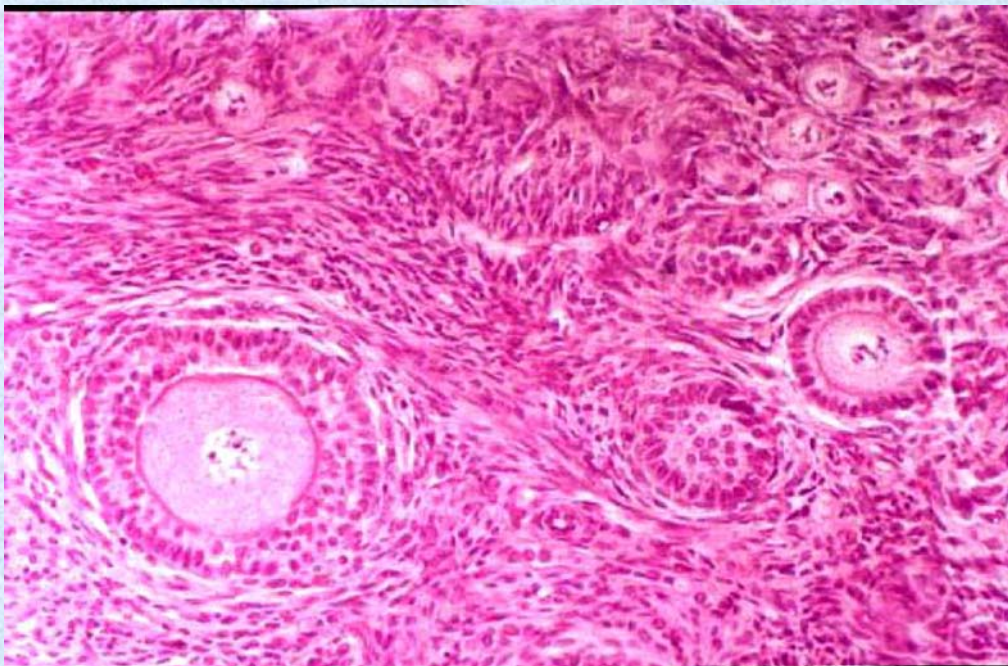
# 前列腺



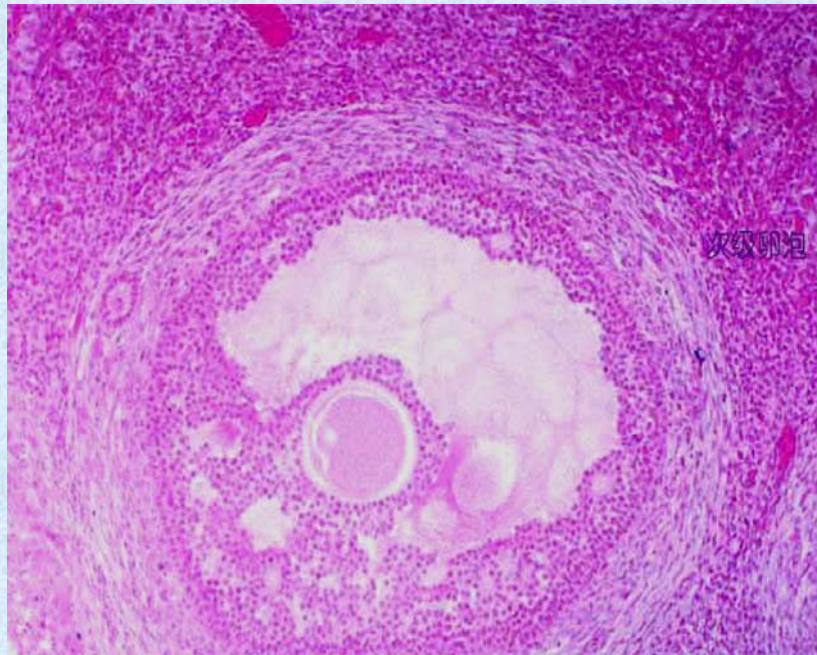
## 卵巢（原始卵泡）



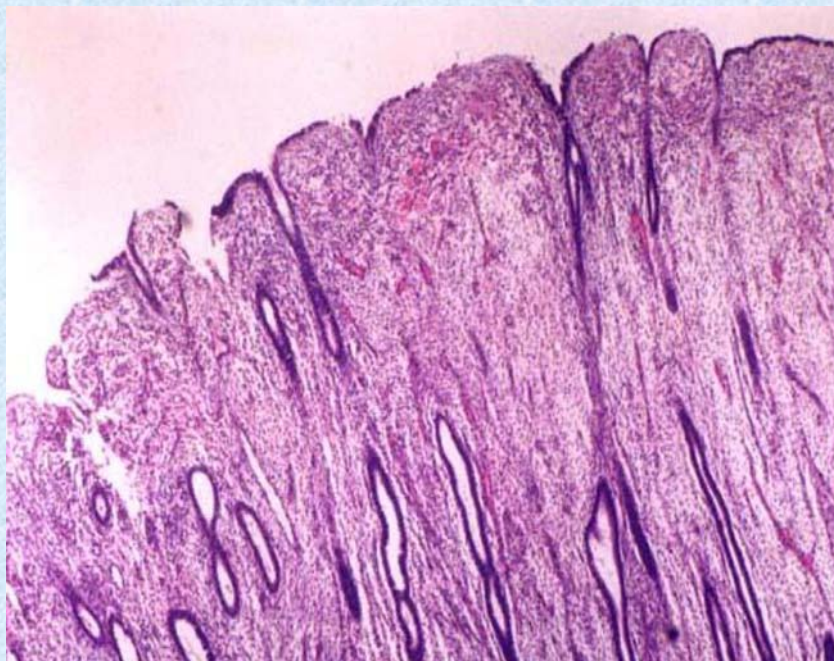
## 卵巢（初级卵泡）



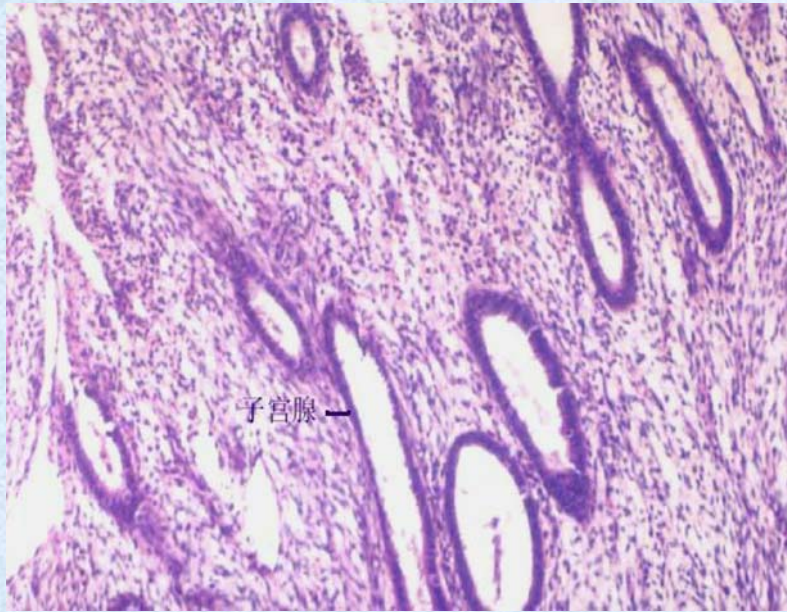
## 卵巢（次级卵泡）



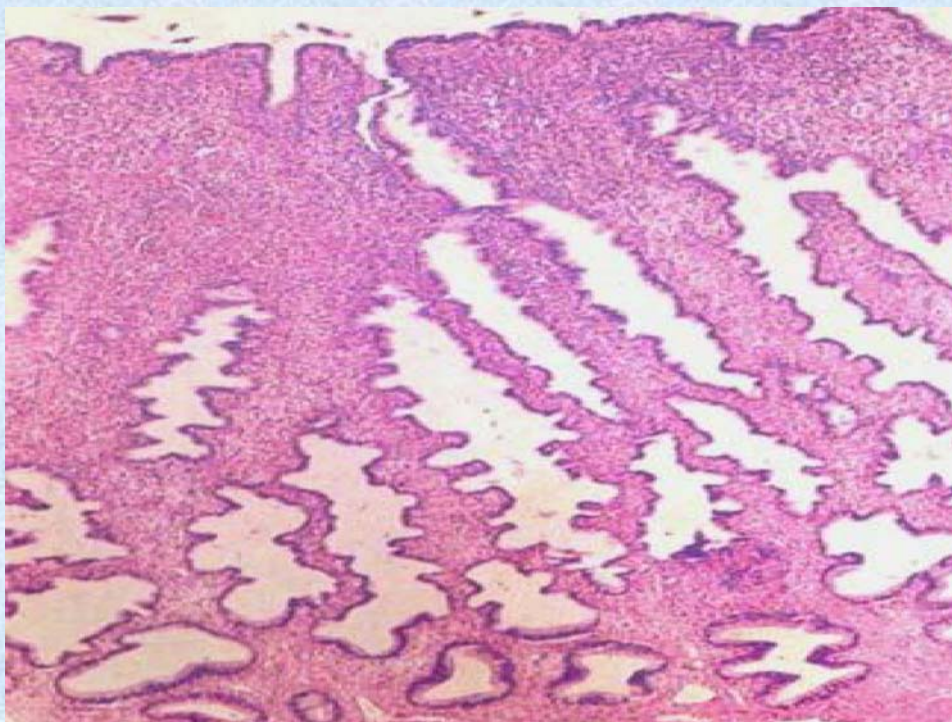
## 子宫(增生期)



## 子宫(增生期)



## 子宫(分泌期)



# 子宫(分泌期)

