

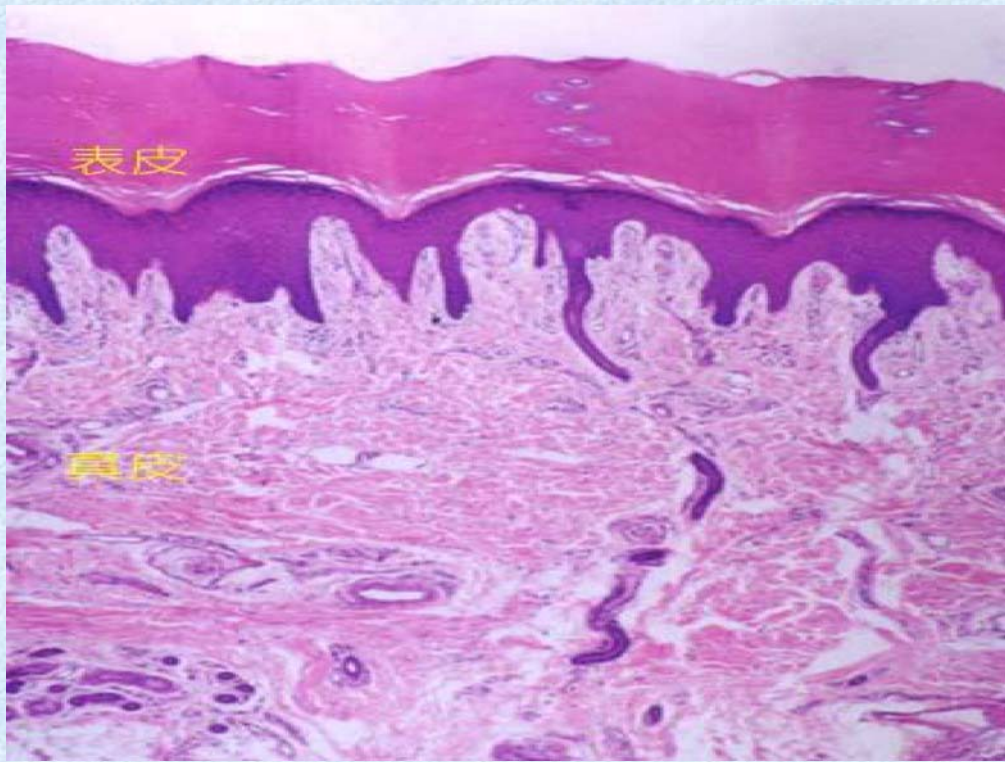
实验四 内分泌、呼吸、免疫

- 目的
- 1、掌握皮肤的分层和结构
- 2、掌握内分泌腺的结构特点
- 3、掌握淋巴结、脾脏基本结构及胸腺结构特点
- 4、掌握肺导气部和呼吸部结构特征

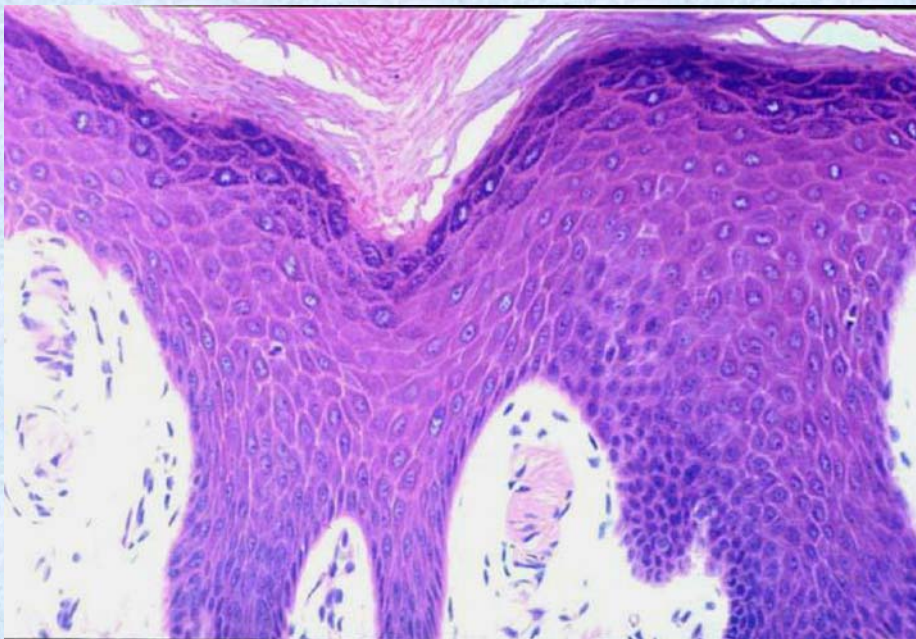
实验内容

- 1. 手掌皮27
- 2. 头皮28
- 3. 甲状腺45 65
- 4. 肾上腺44
- 5. 脑垂体43
- 6. 胸腺26
- 7. 淋巴结24
- 8. 脾25
- 9. 气管39
- 10. 肺40
- 操作实验：纤毛摆动

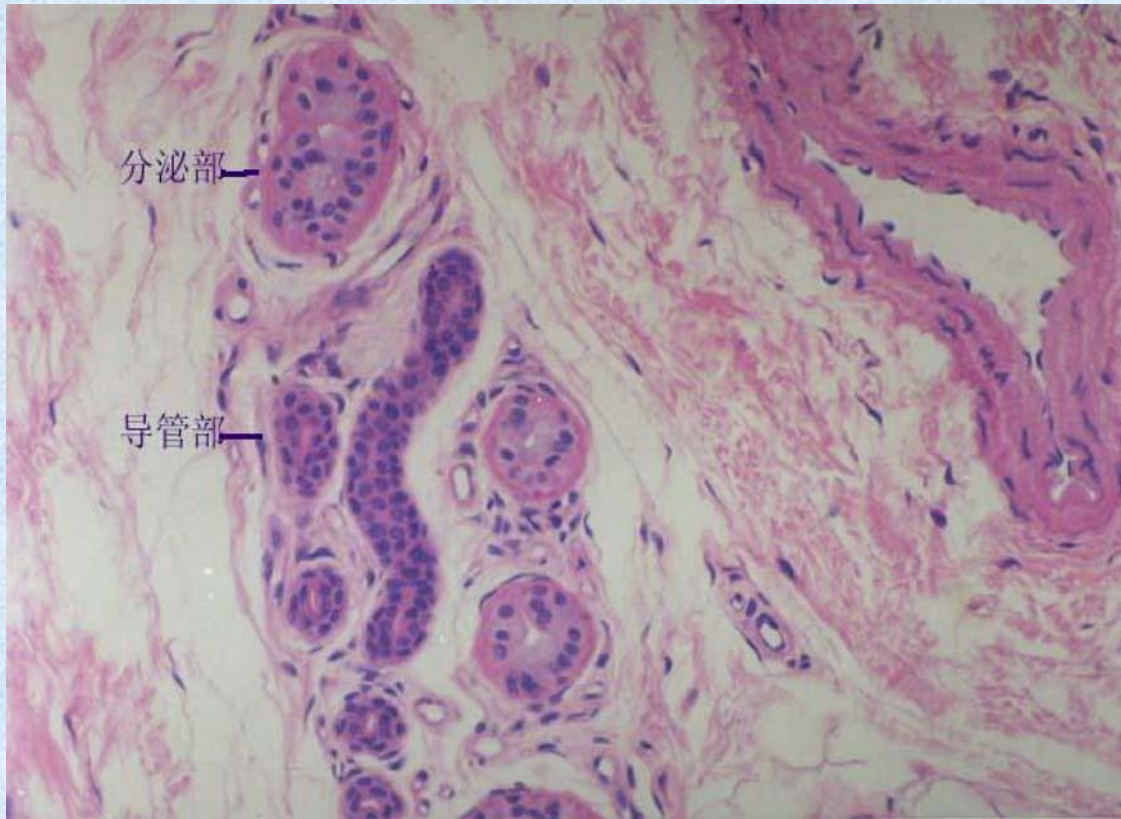
皮肤



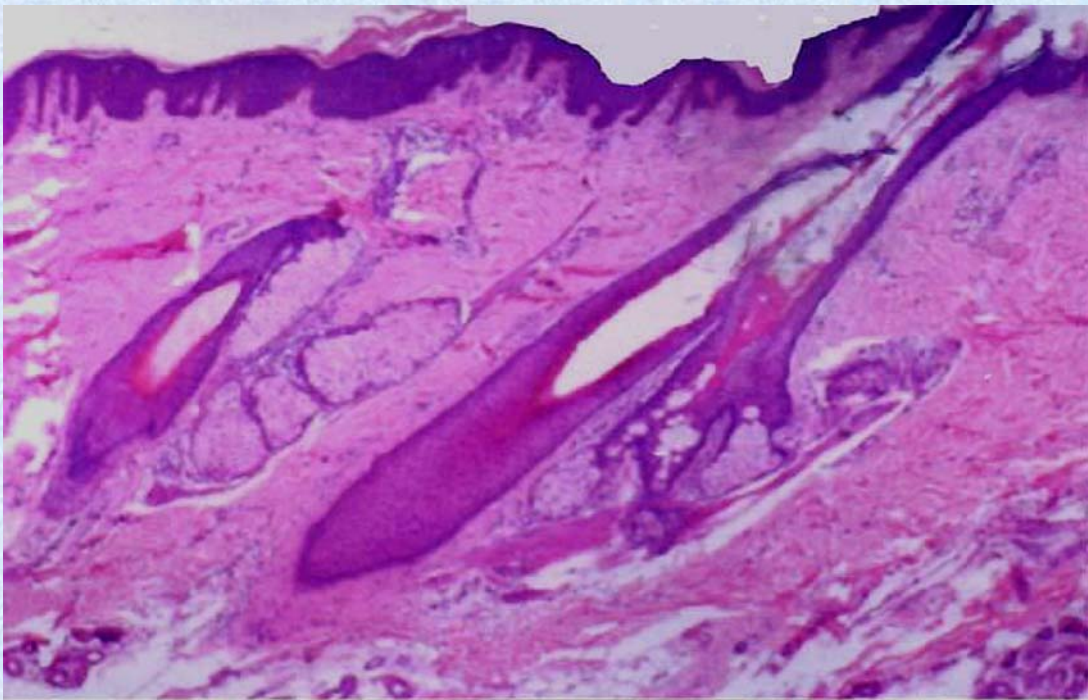
皮肤



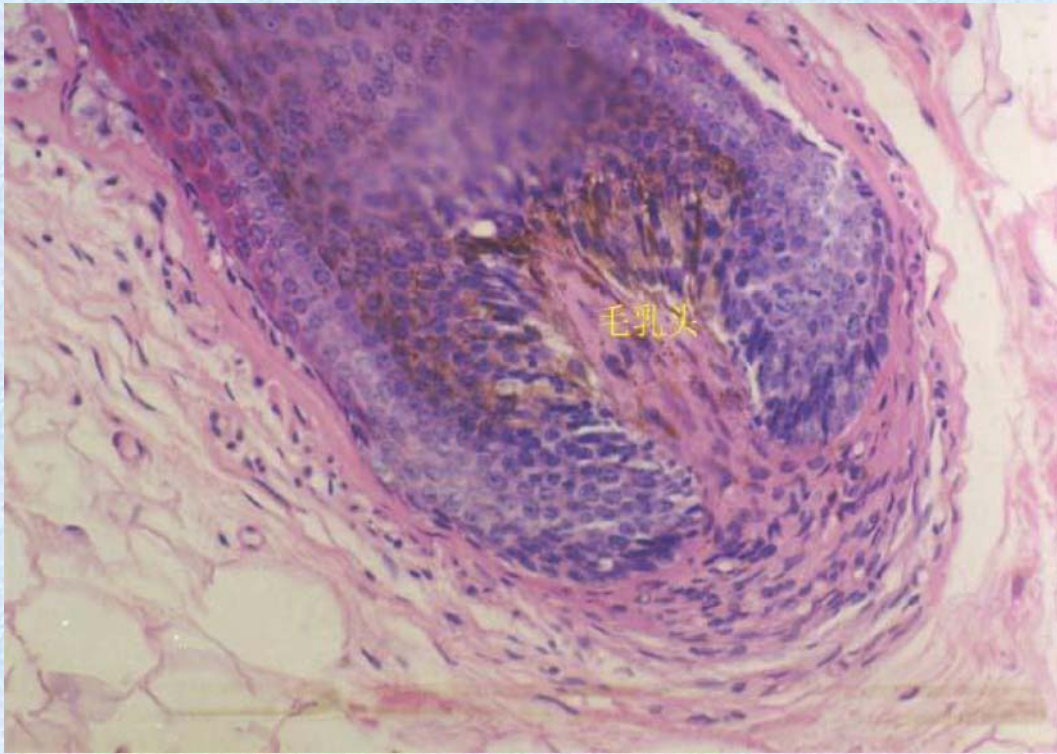
皮肤（汗腺）



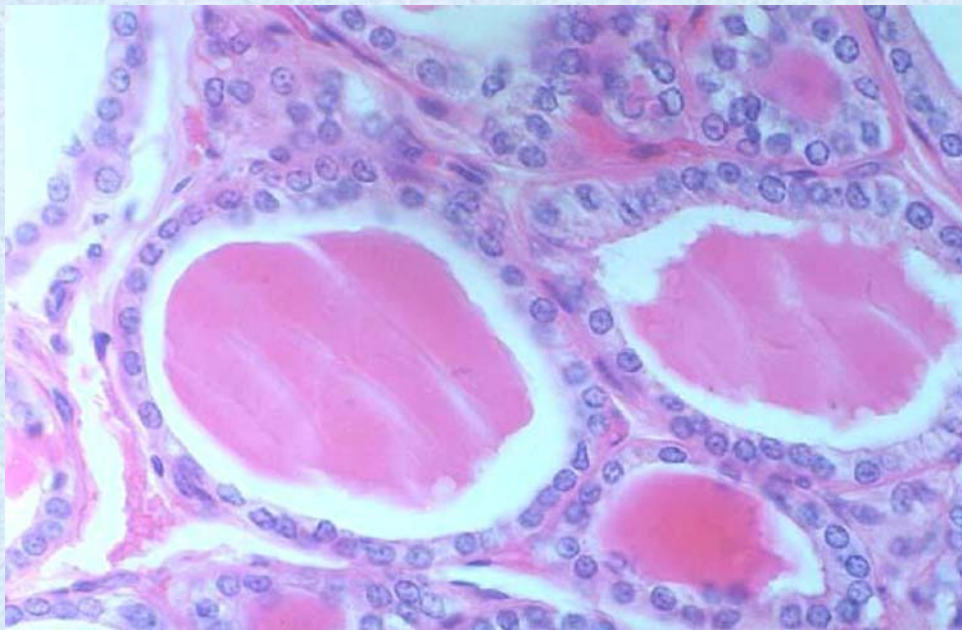
头皮



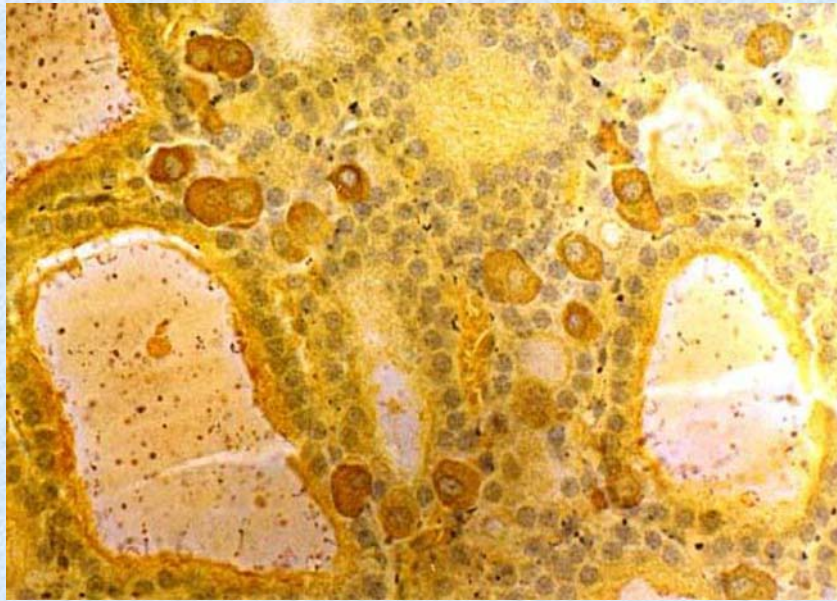
头皮（毛乳头）



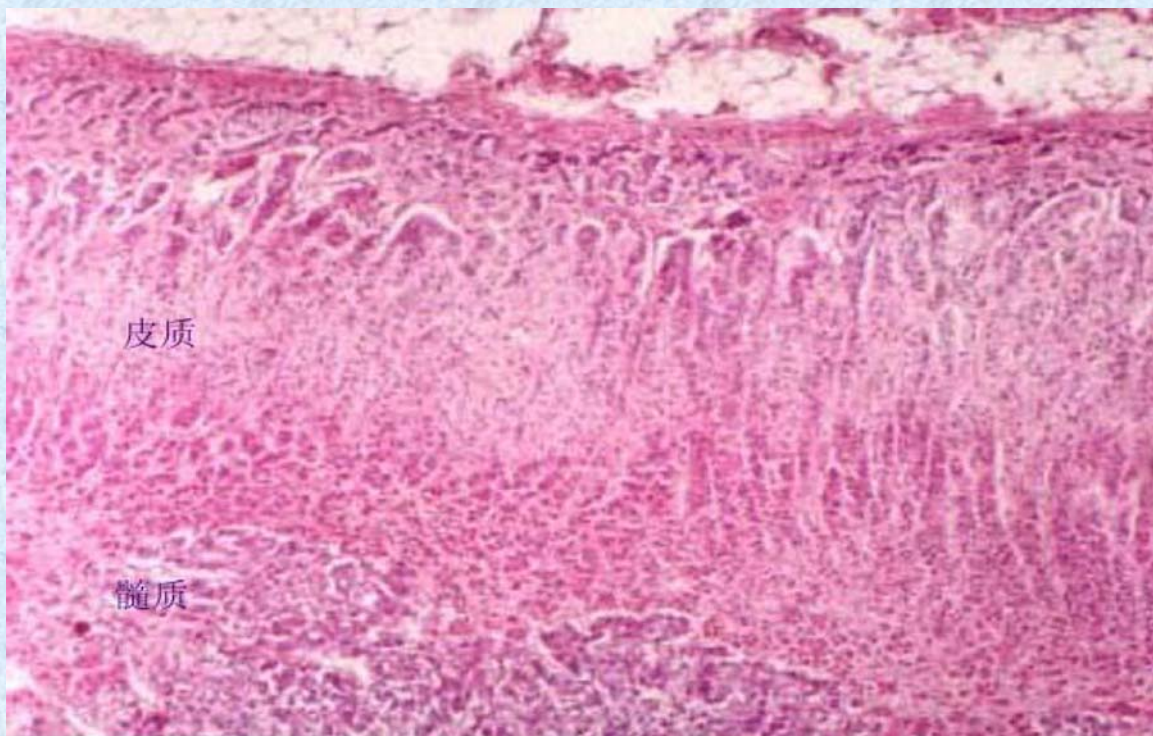
甲状腺



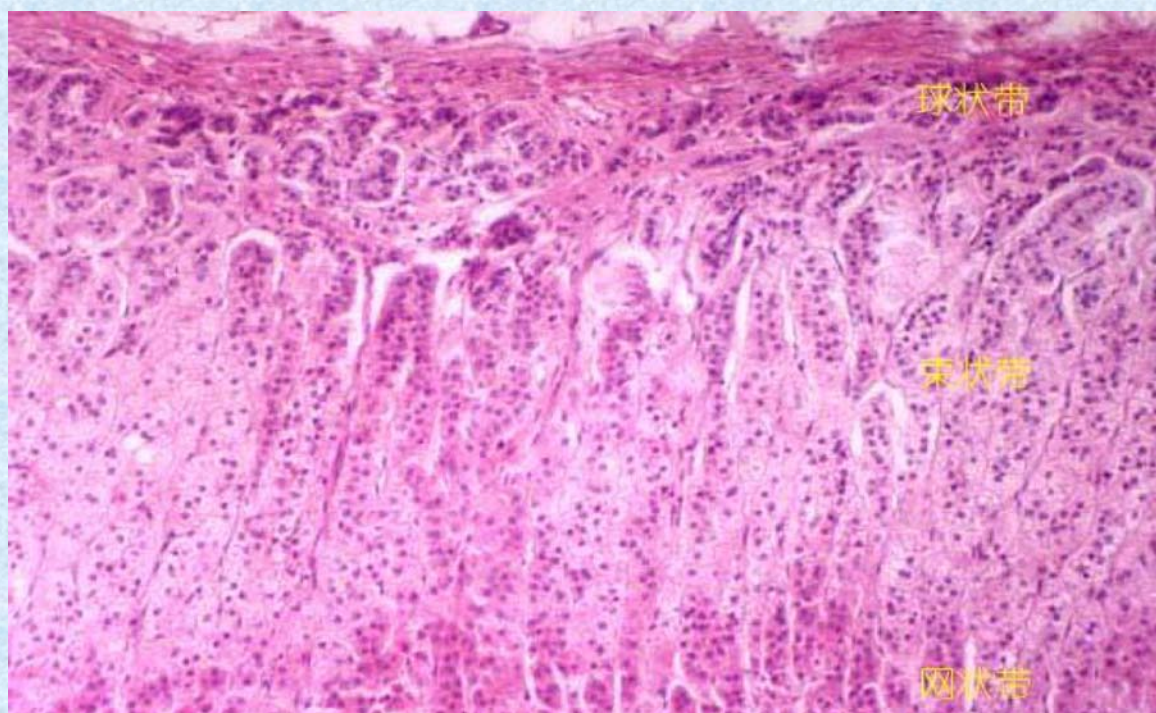
甲状腺（滤泡旁细胞）



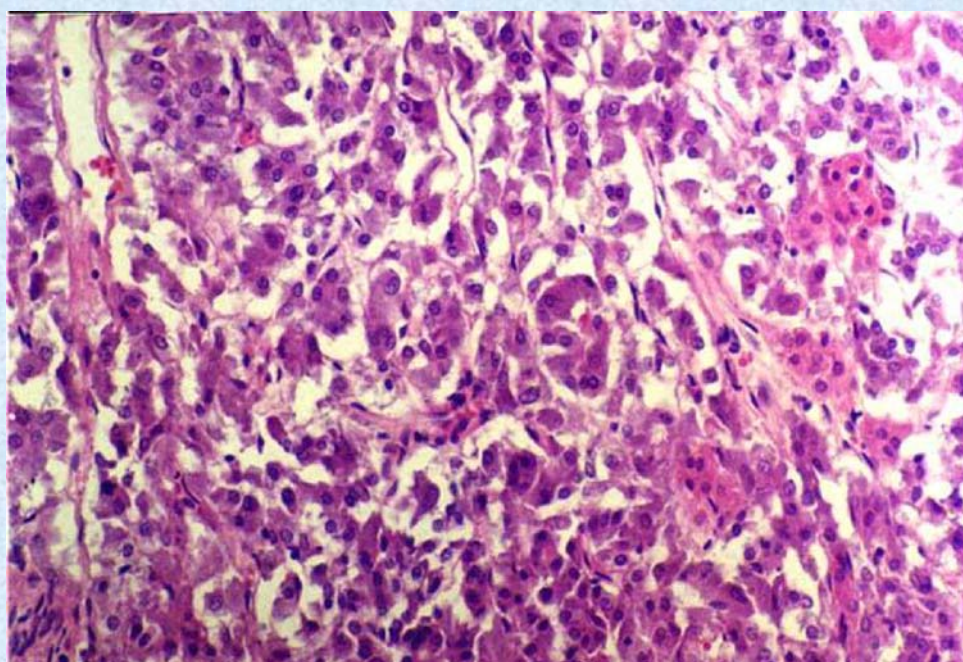
肾上腺



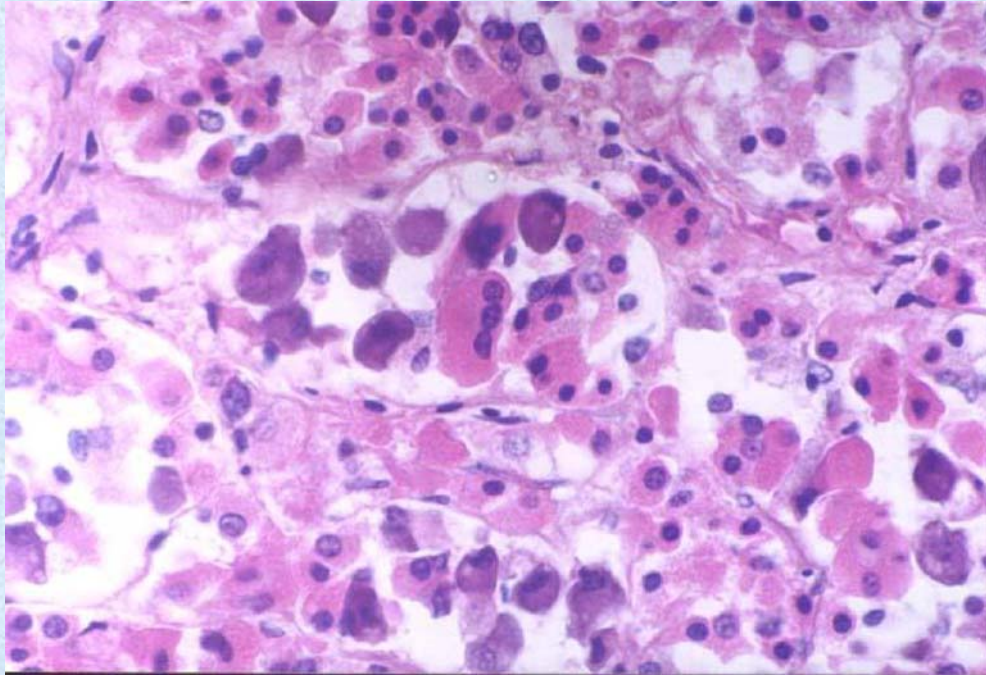
肾上腺（皮质）



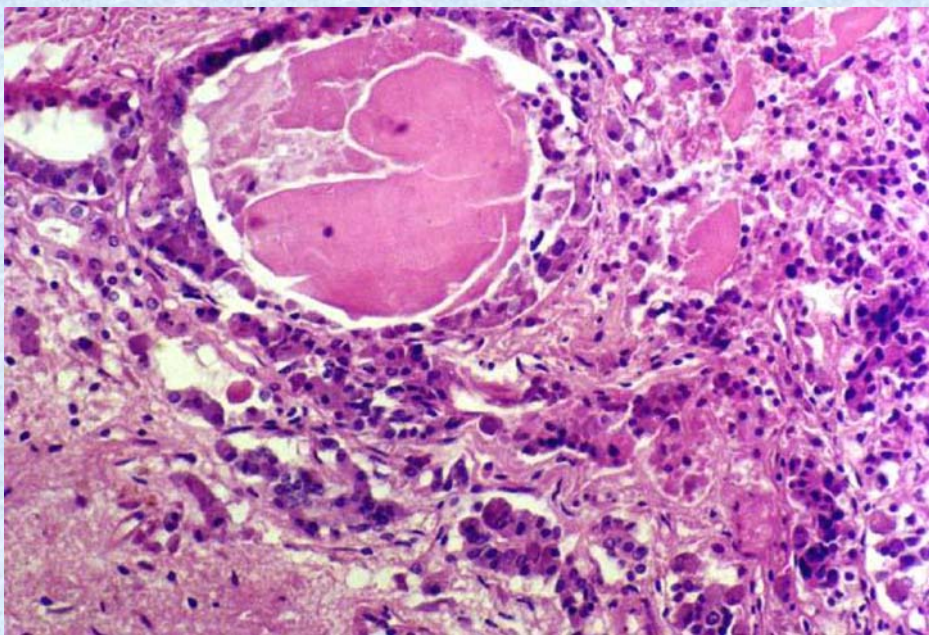
肾上腺（髓质）



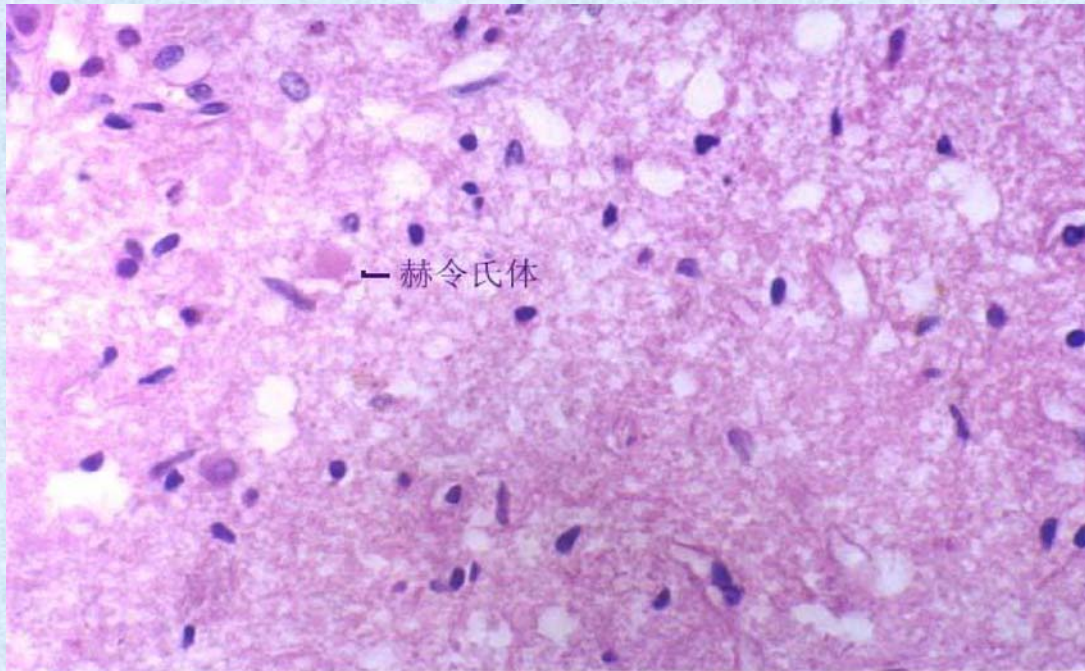
脑垂体（腺垂体）



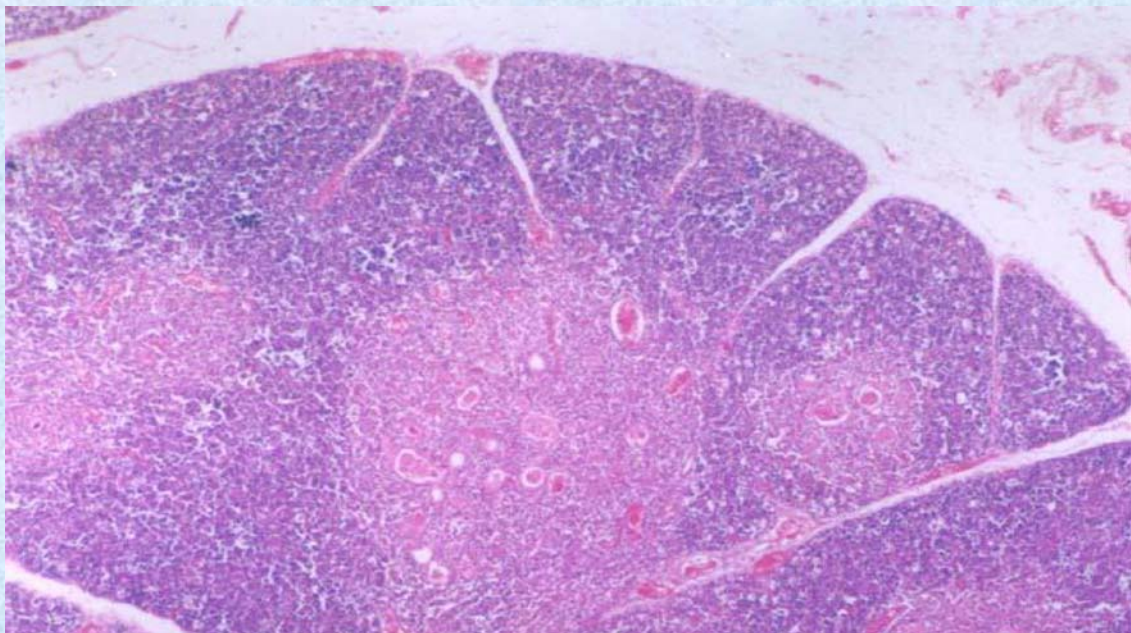
脑垂体（中间部）



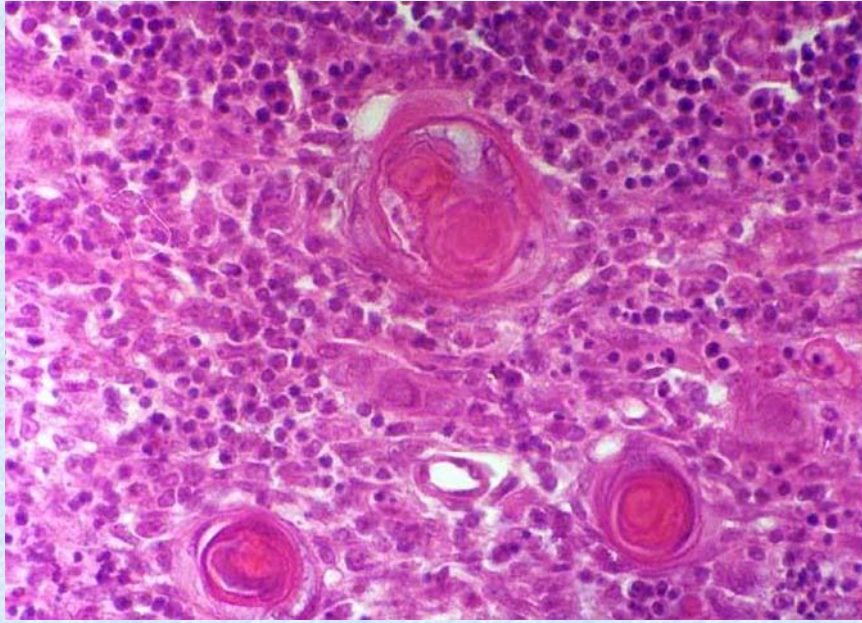
脑垂体（神经垂体）



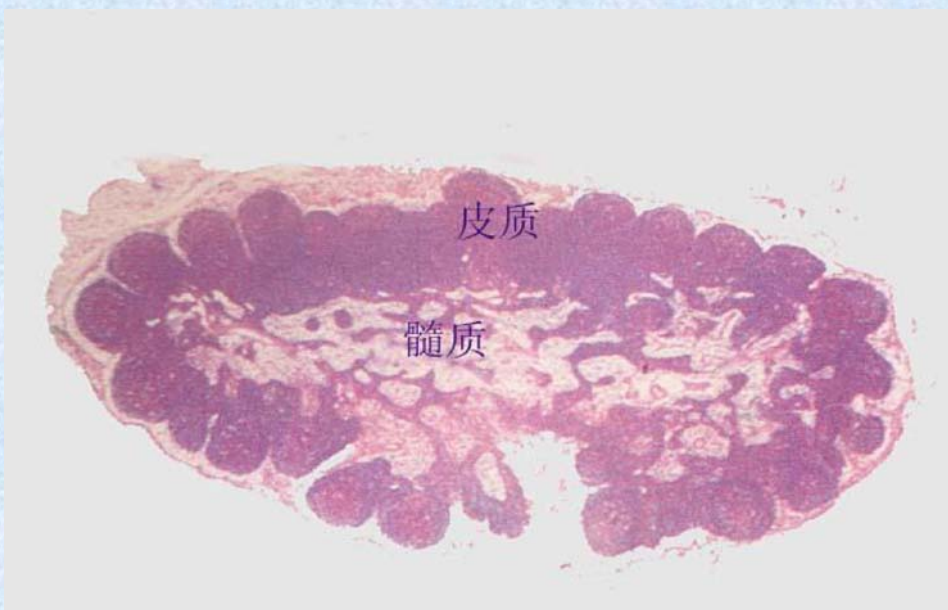
胸腺



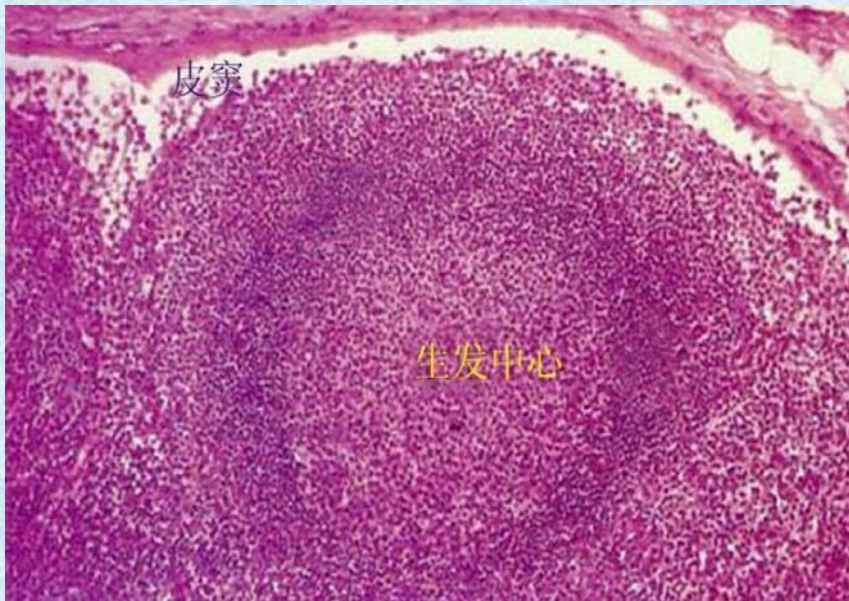
胸腺（胸腺小体）



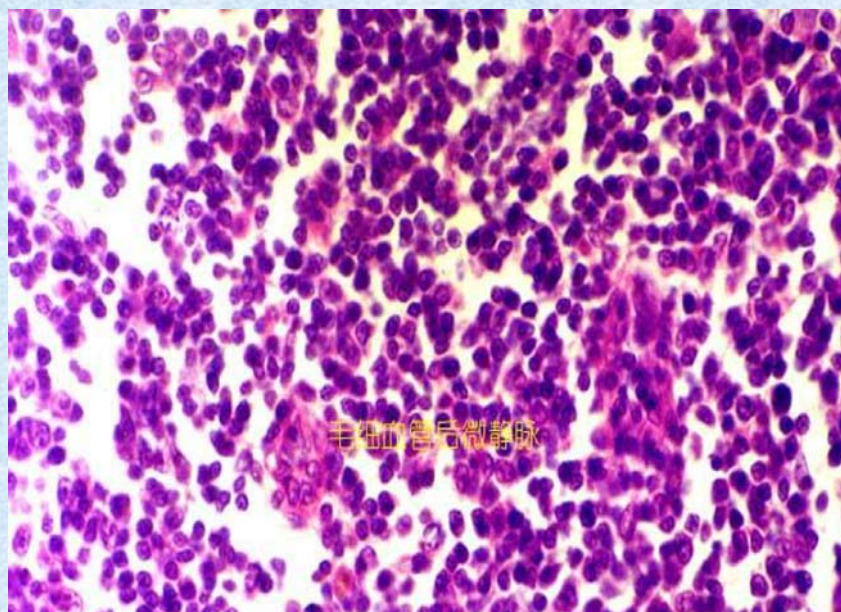
淋巴结



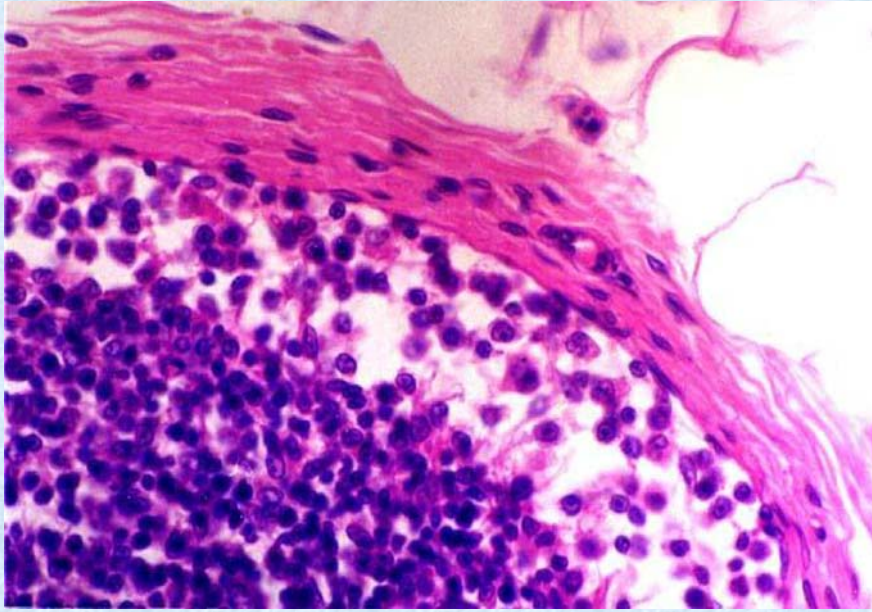
淋巴结（淋巴小结）



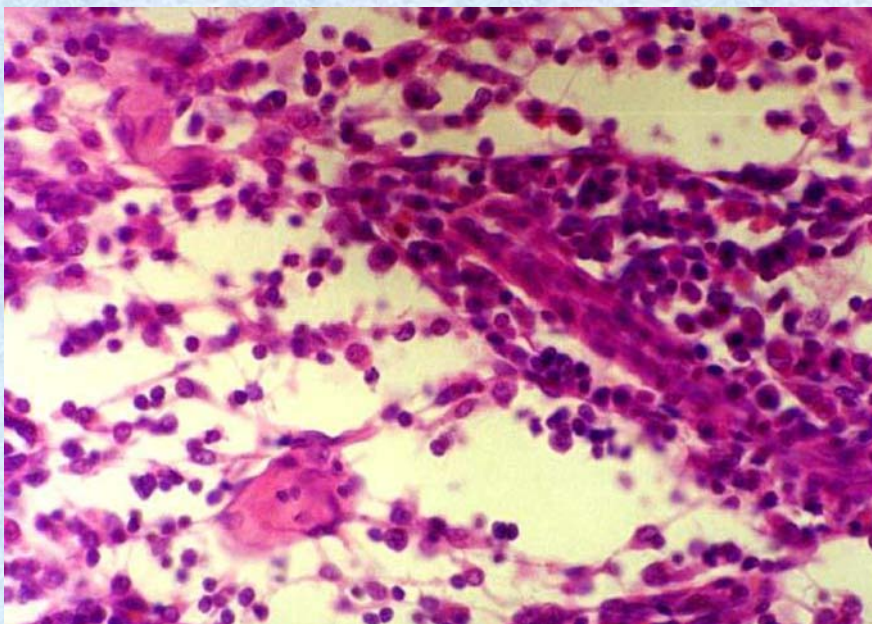
淋巴结（副皮质区）



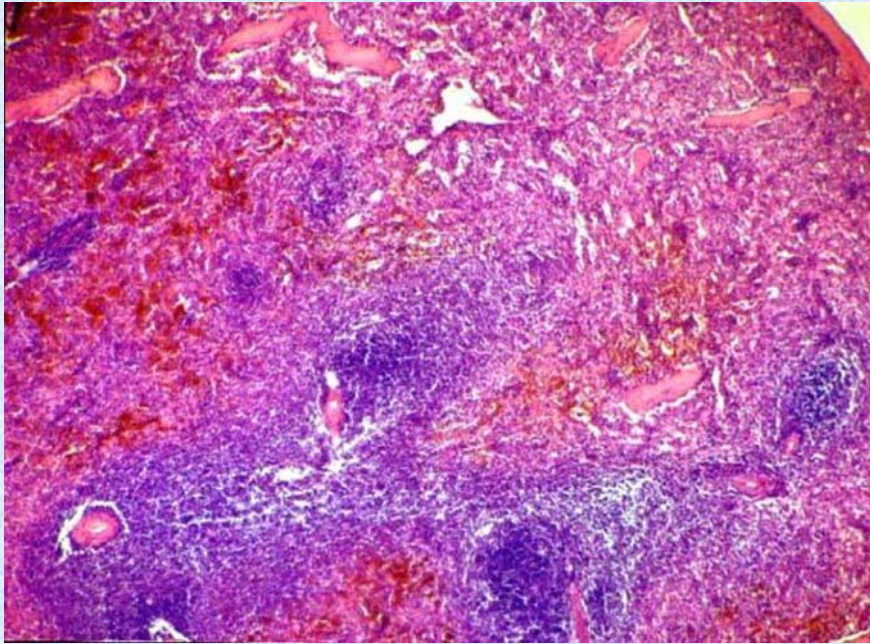
淋巴结（皮窦）



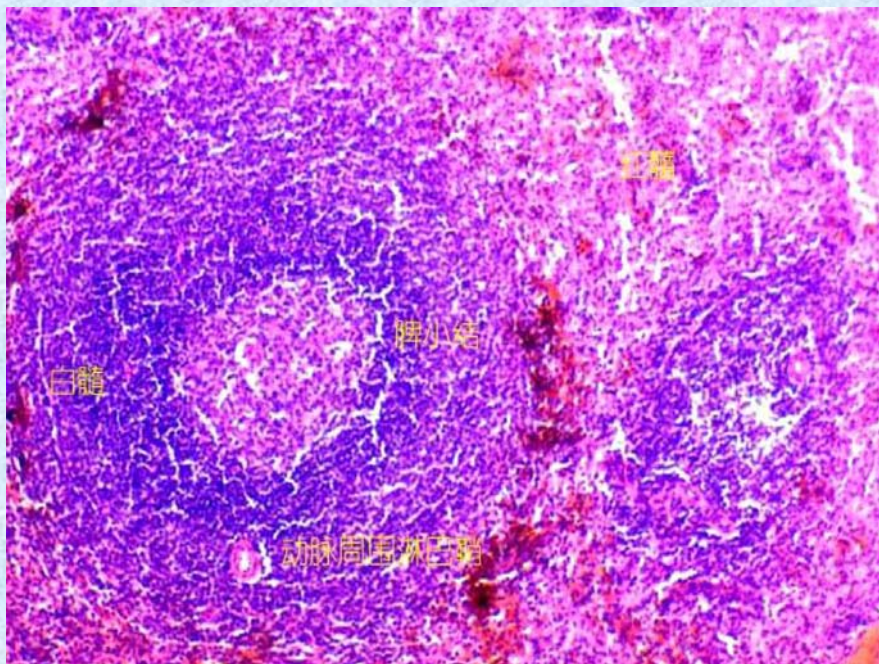
淋巴结（髓质）



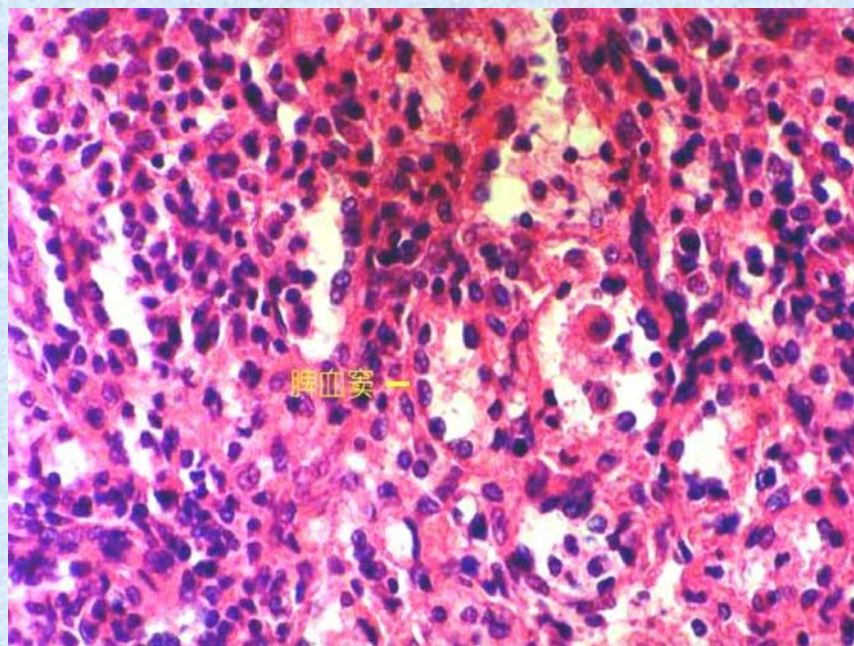
脾



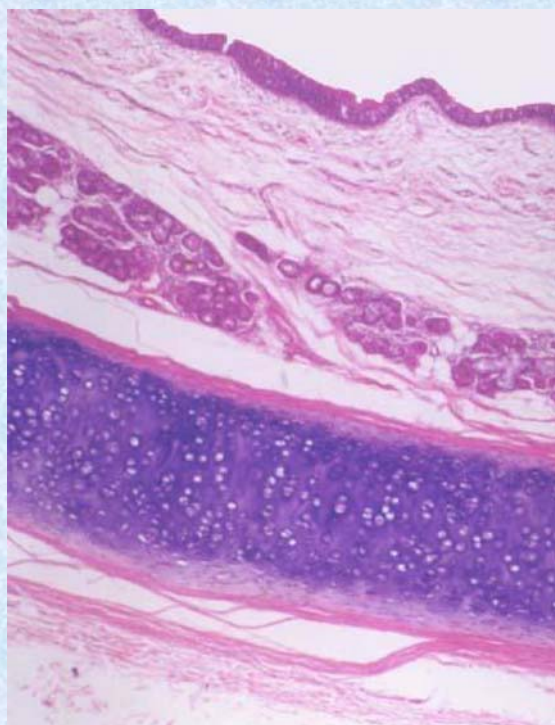
脾（白髓）



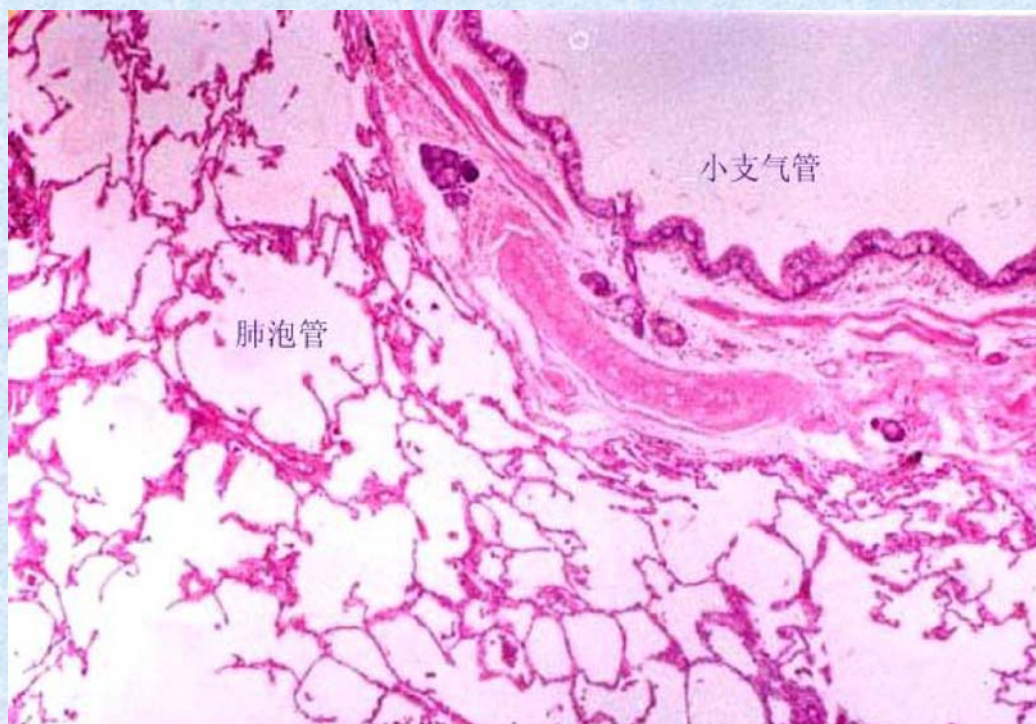
脾（红髓）



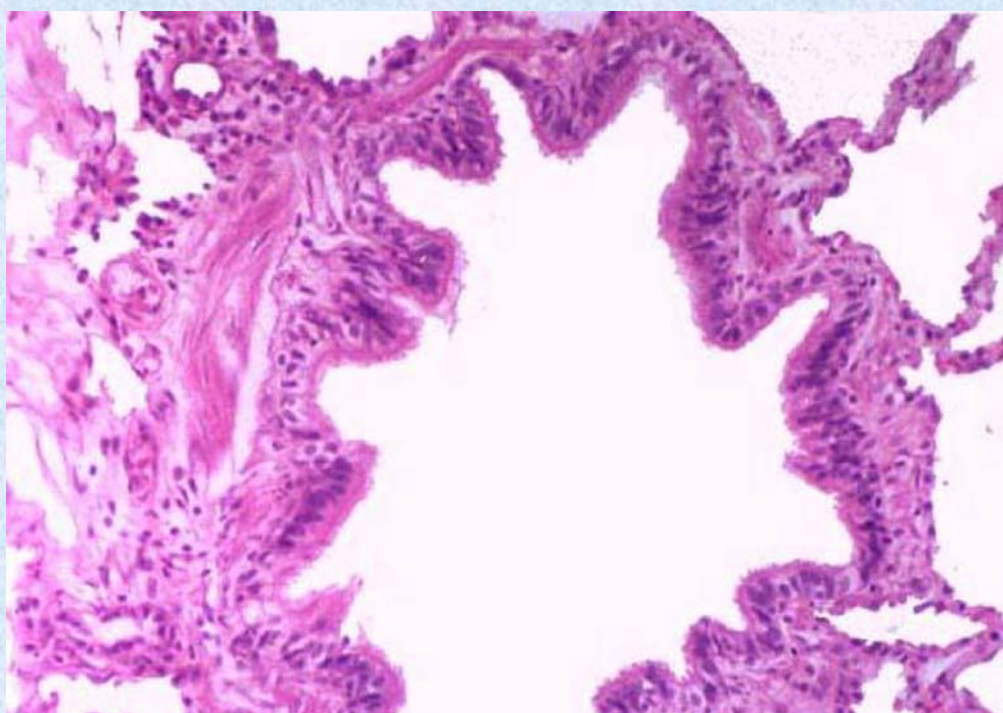
气管



肺



肺（终末细支气管）



肺（呼吸部）

