

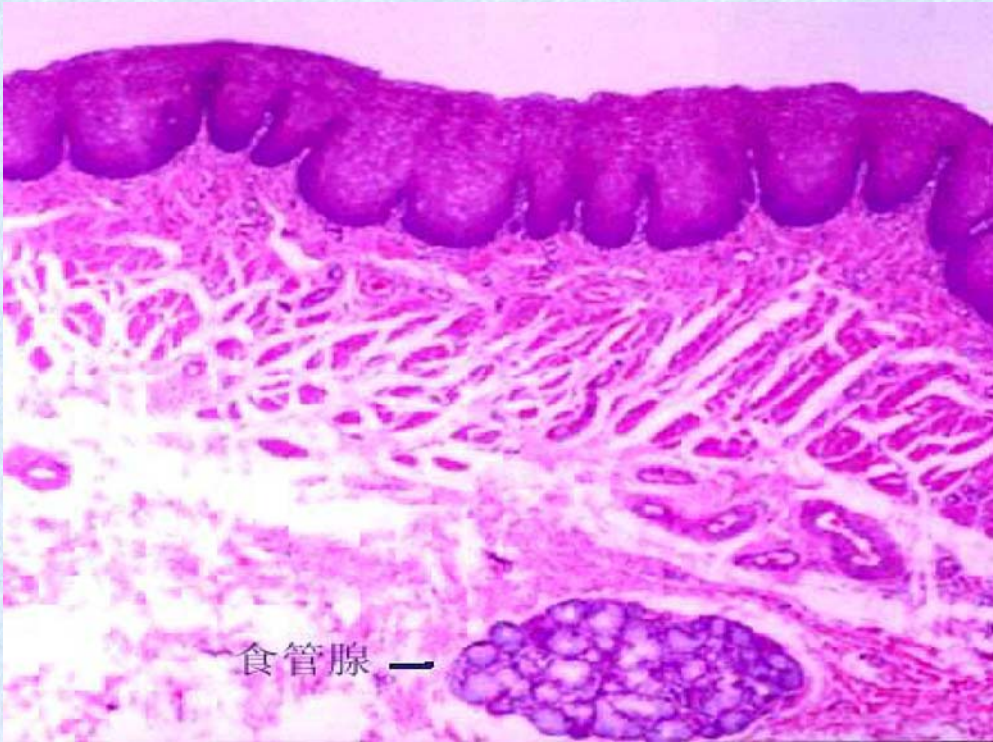
## 实验五 消化、泌尿系统

- 目的:
- 1.掌握消化管一般结构,胃及小肠结构特点
- 2.掌握消化腺结构
- 3.掌握肾小体.近曲小管和远曲小管的组织结构

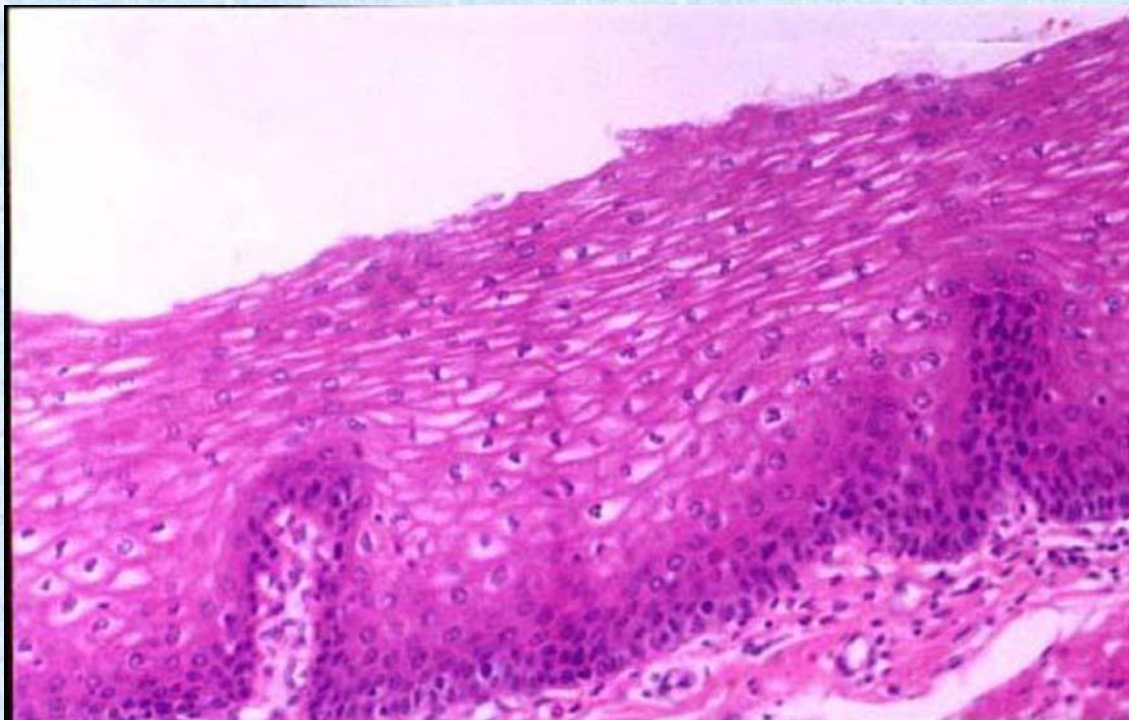
## 实验内容

- 1.食管29#
- 2.胃30# (人,胃)  
(绘图:胃底腺,HE染色,放大40X10)
- 3.十二指肠31#
- 4.空肠32#
- 5.回肠33#
- 6.结肠34#
- 7.阑尾35#
- 8.小肠绒毛、中央乳糜管(示教)
- 9.胰腺 37#
- 10.肝脏 38#, 66#
- 8.肾 41#

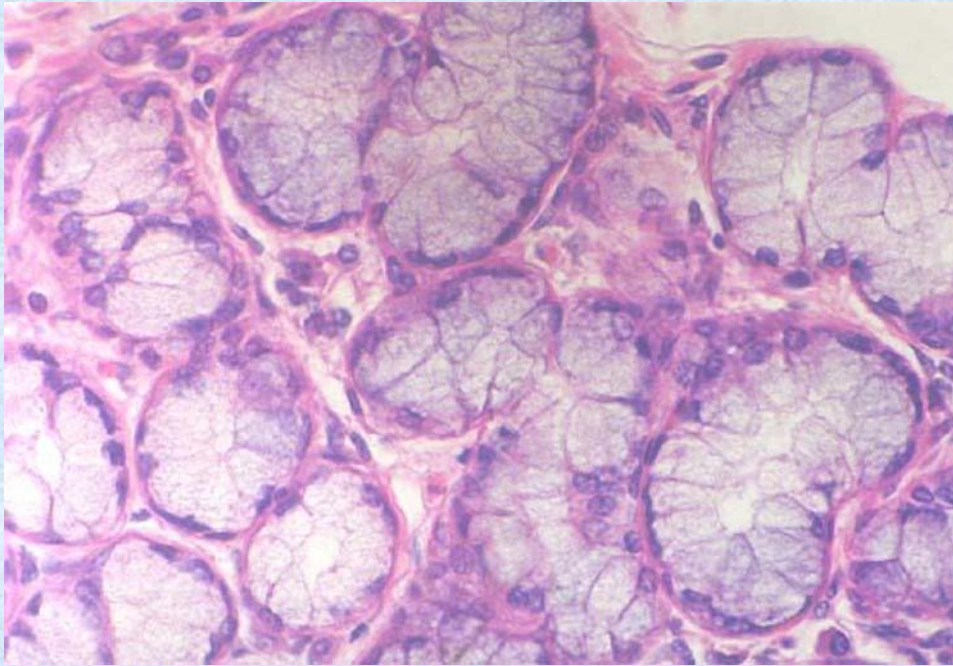
# 食管



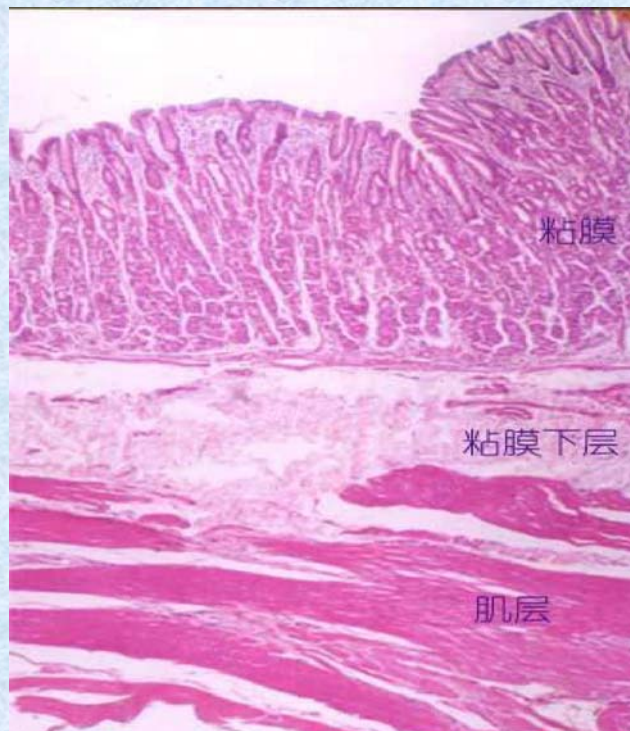
# 食管（复层扁平细胞）



# 食管（食管腺）



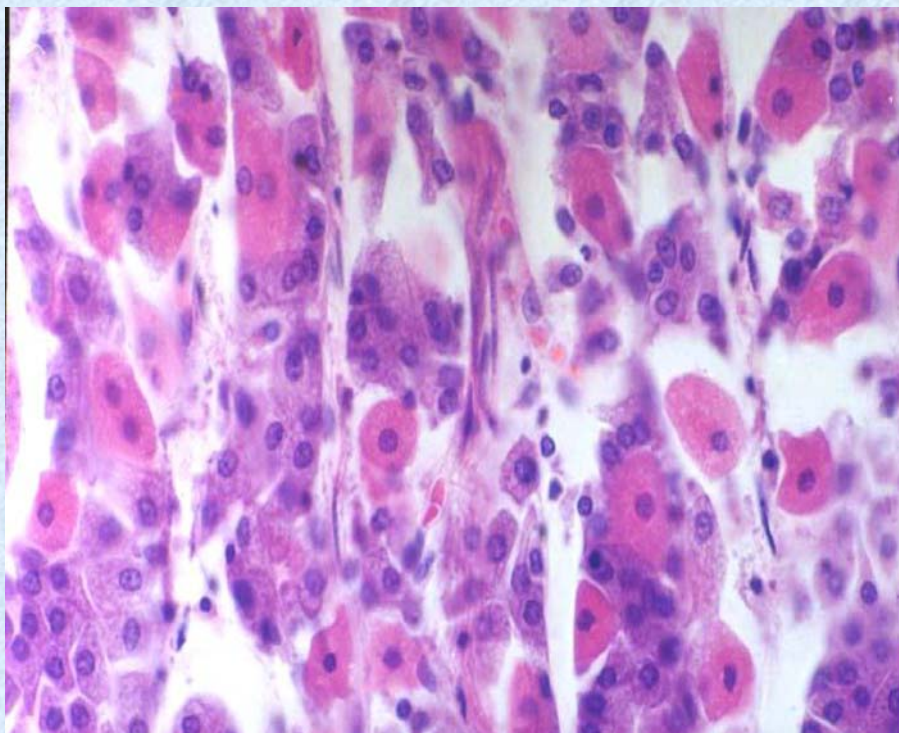
# 胃



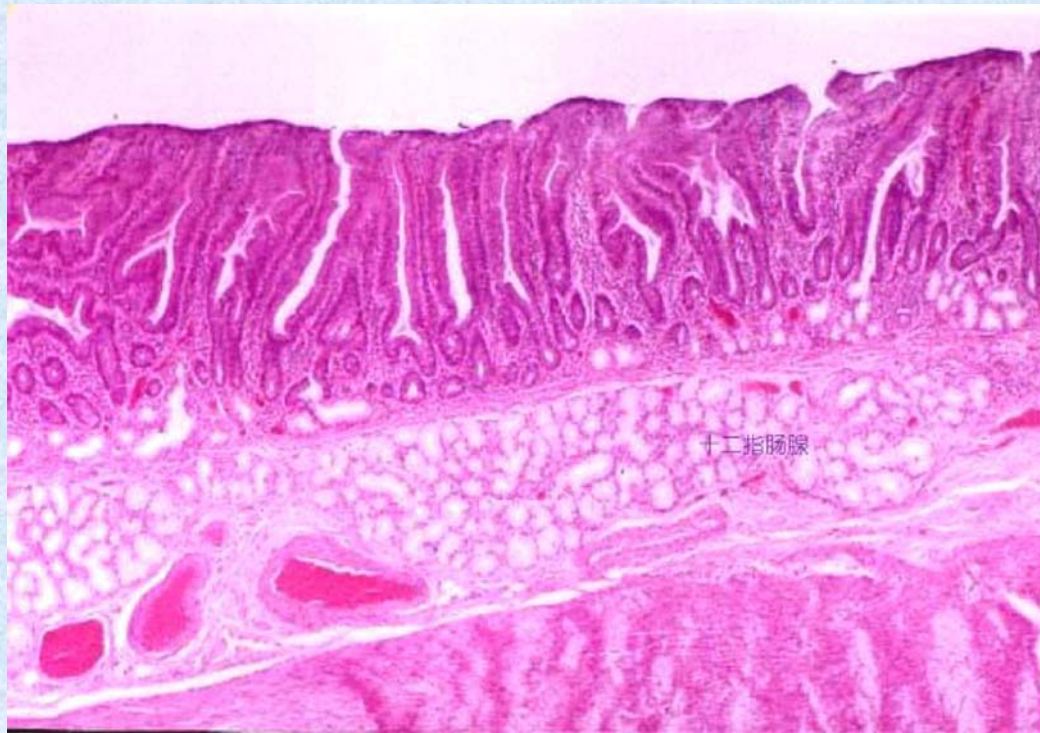
## 胃（胃小凹）



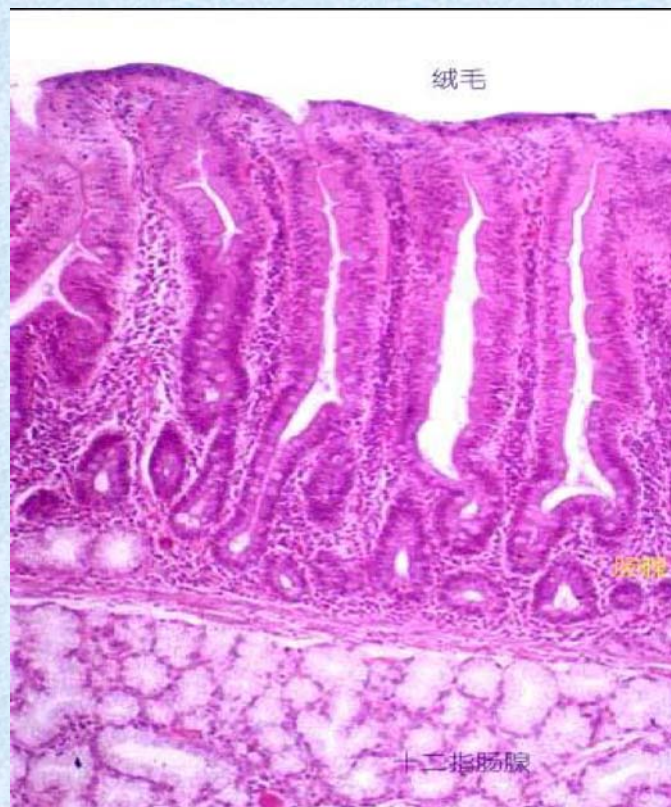
## 胃（胃底腺）



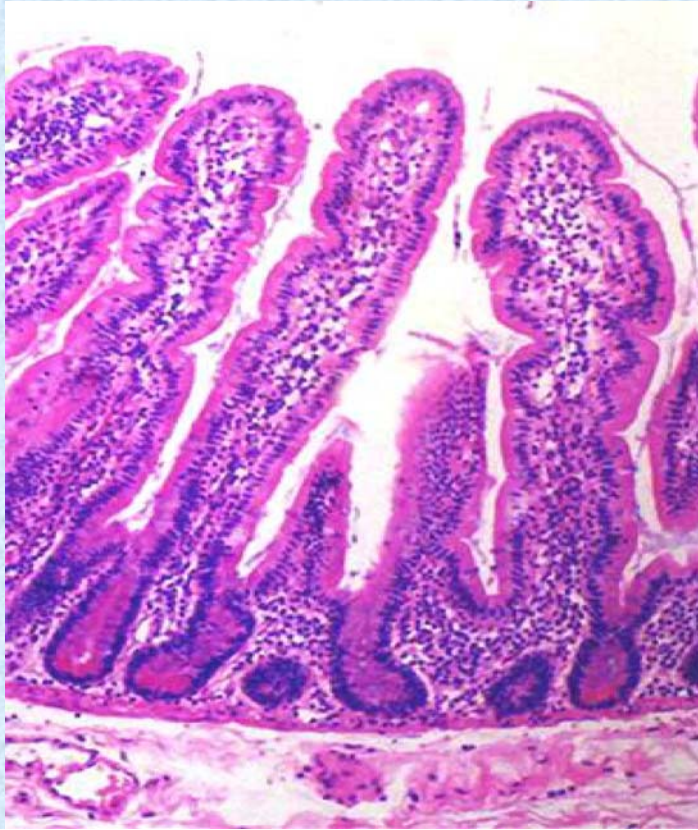
# 十二指肠



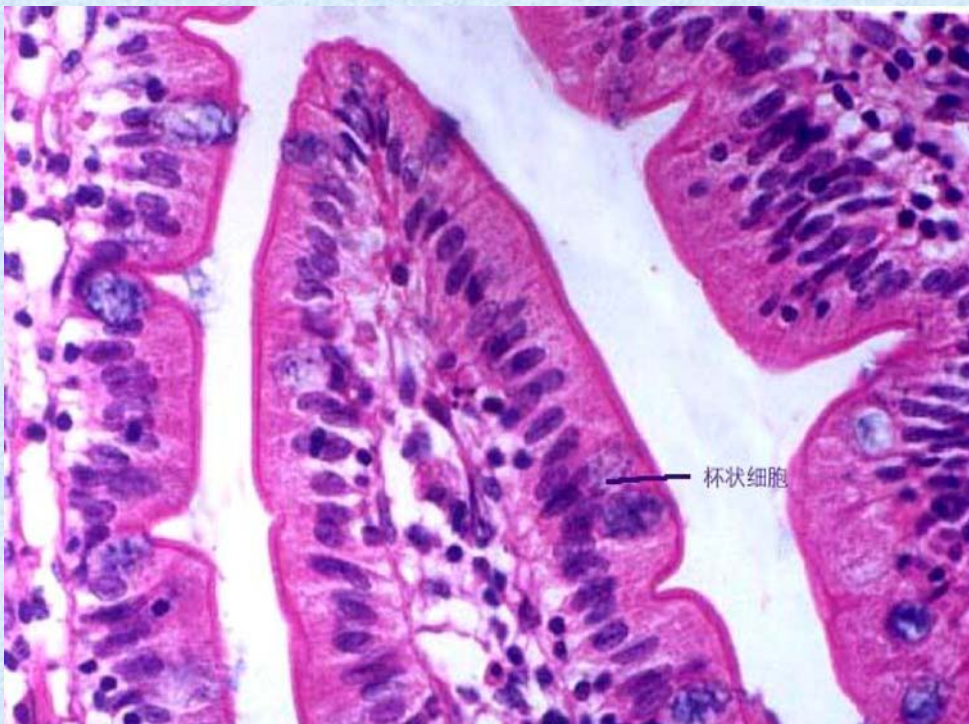
# 十二指肠（十二指肠腺）



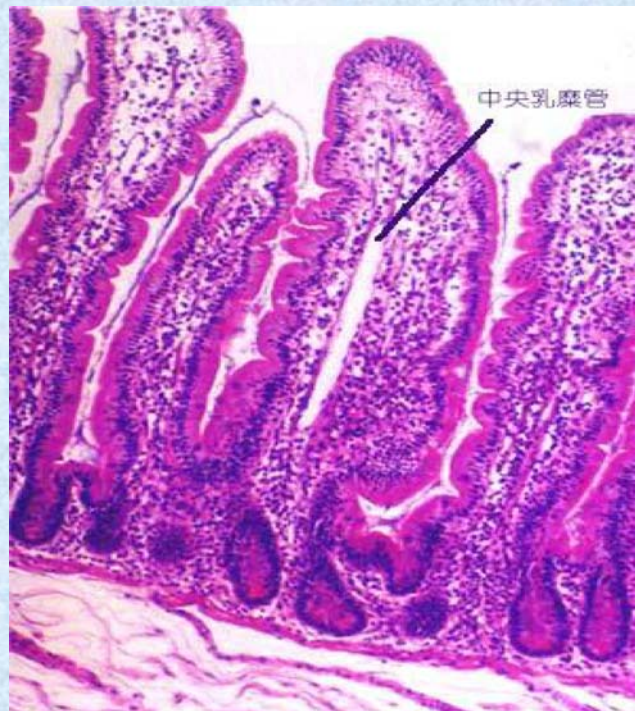
## 空肠（绒毛和肠腺）



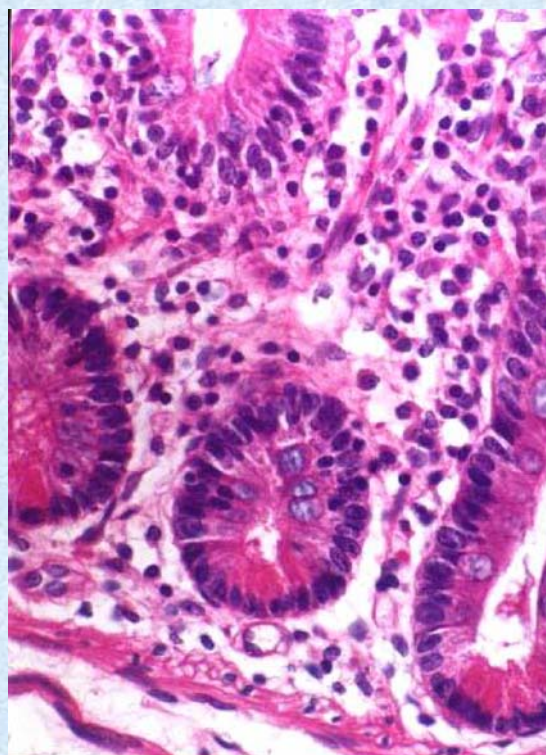
## 空肠（纹状缘）



## 小肠绒毛、中央乳糜管（示教）



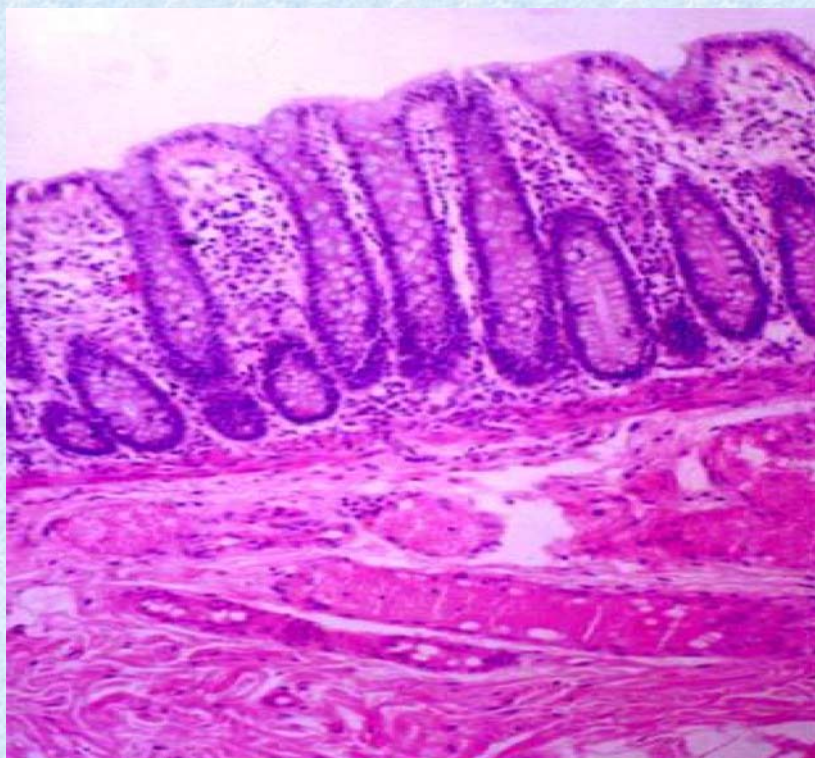
## 空肠（潘氏细胞）



# 回肠

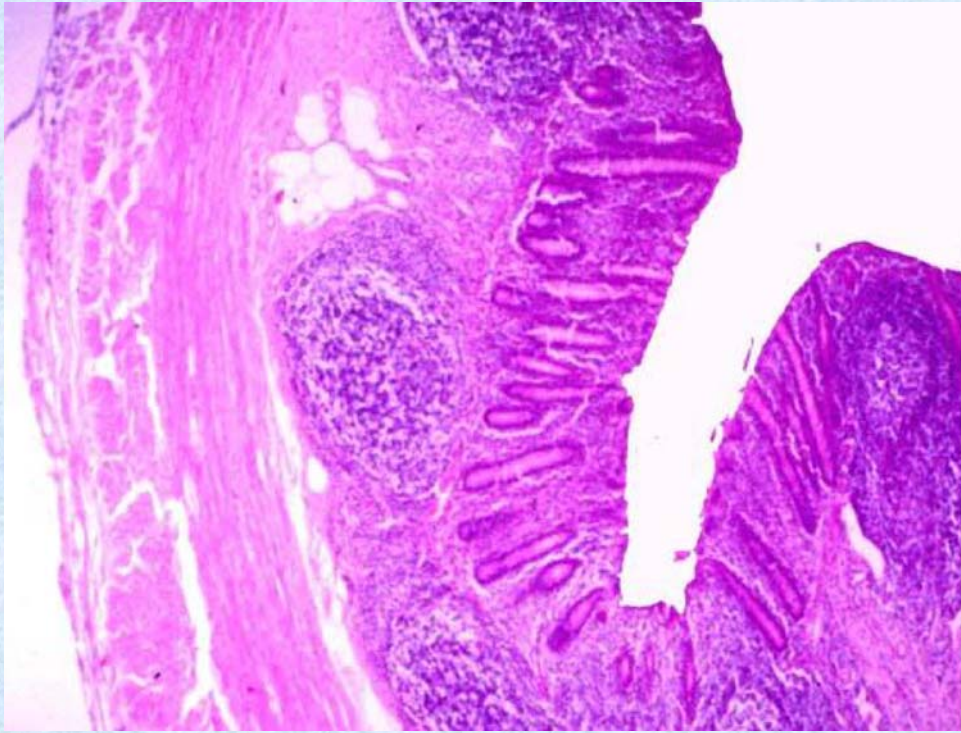


# 结肠

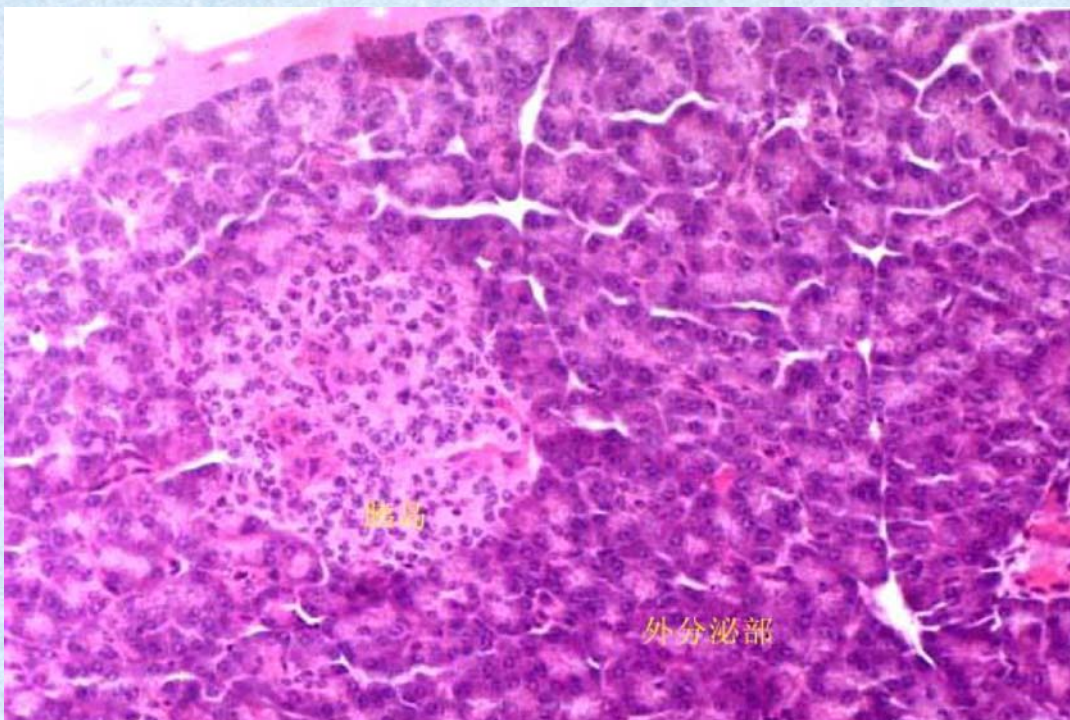




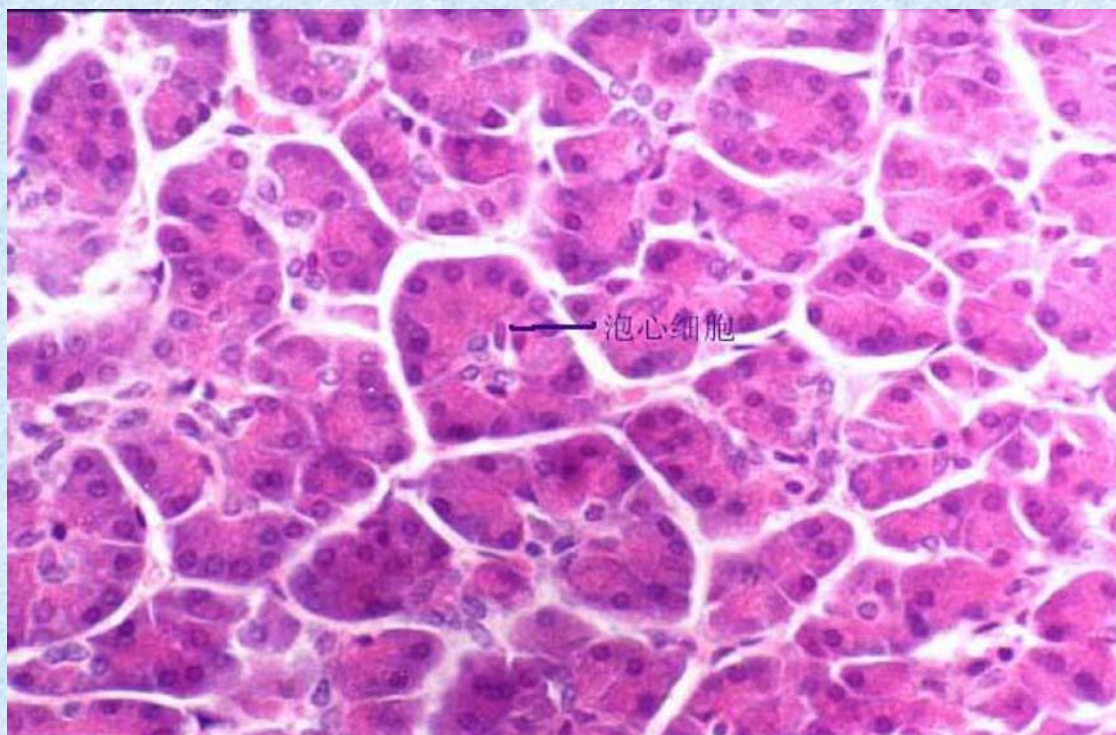
# 阑尾



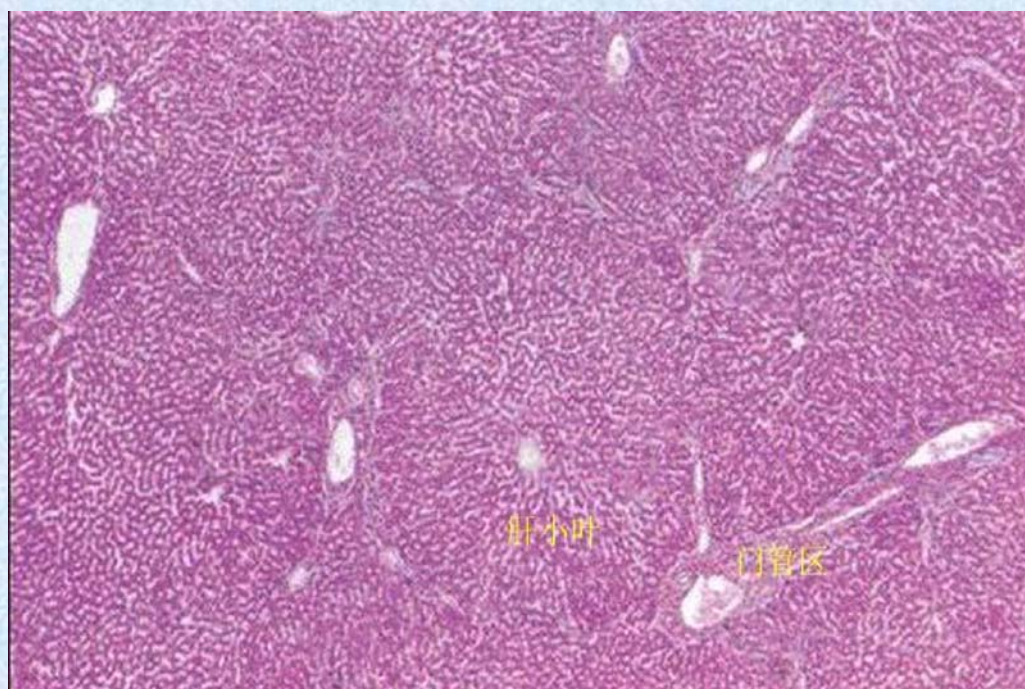
# 胰腺（胰岛）



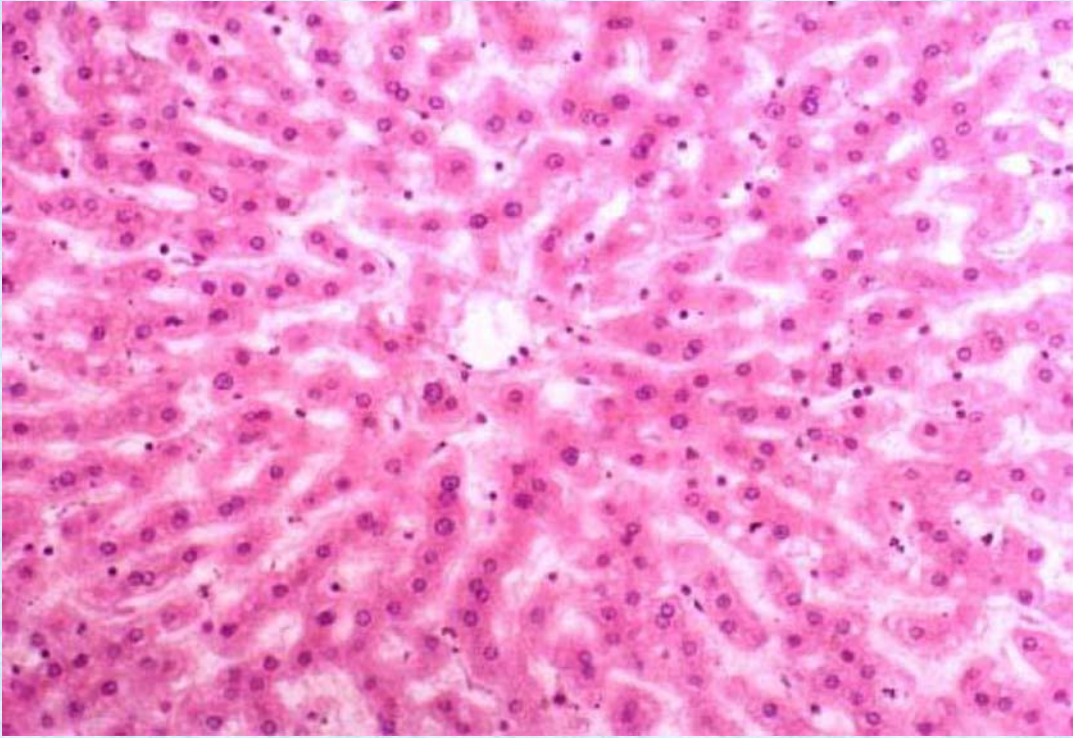
# 胰腺（外分泌部）



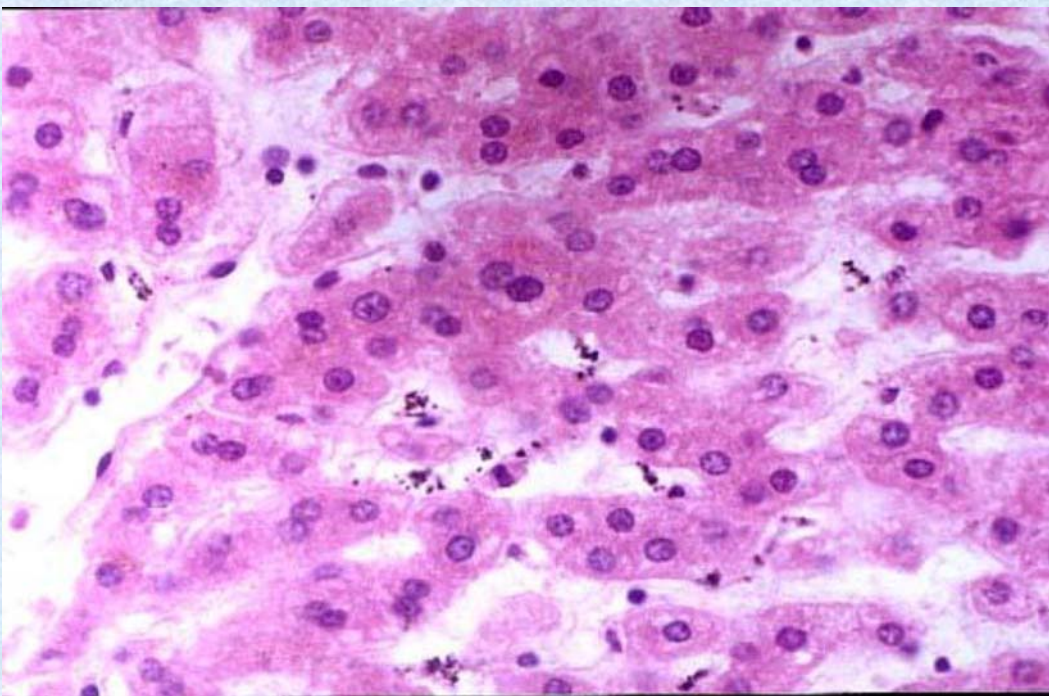
# 肝脏



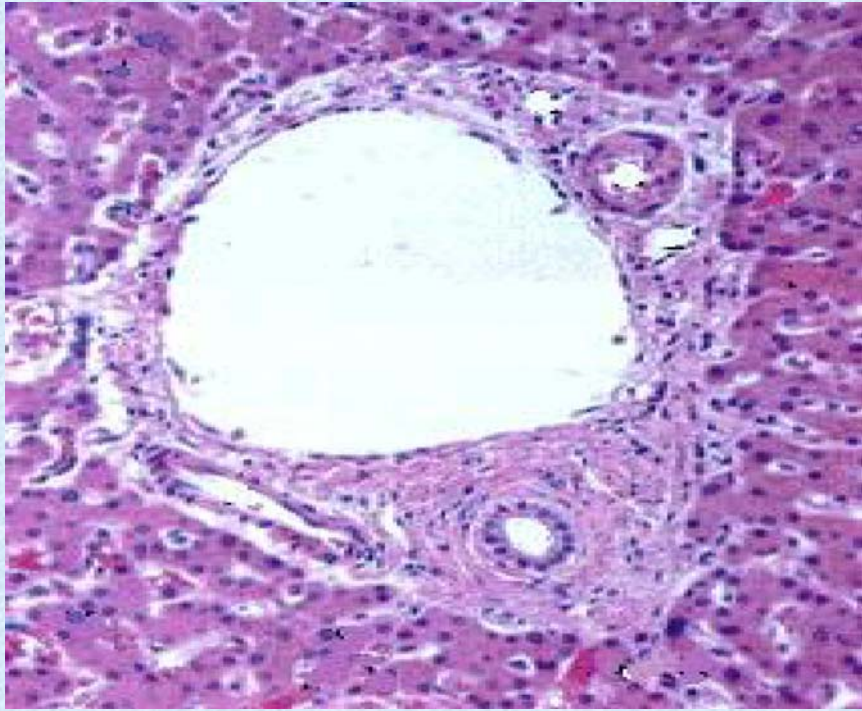
## 肝脏（肝小叶）



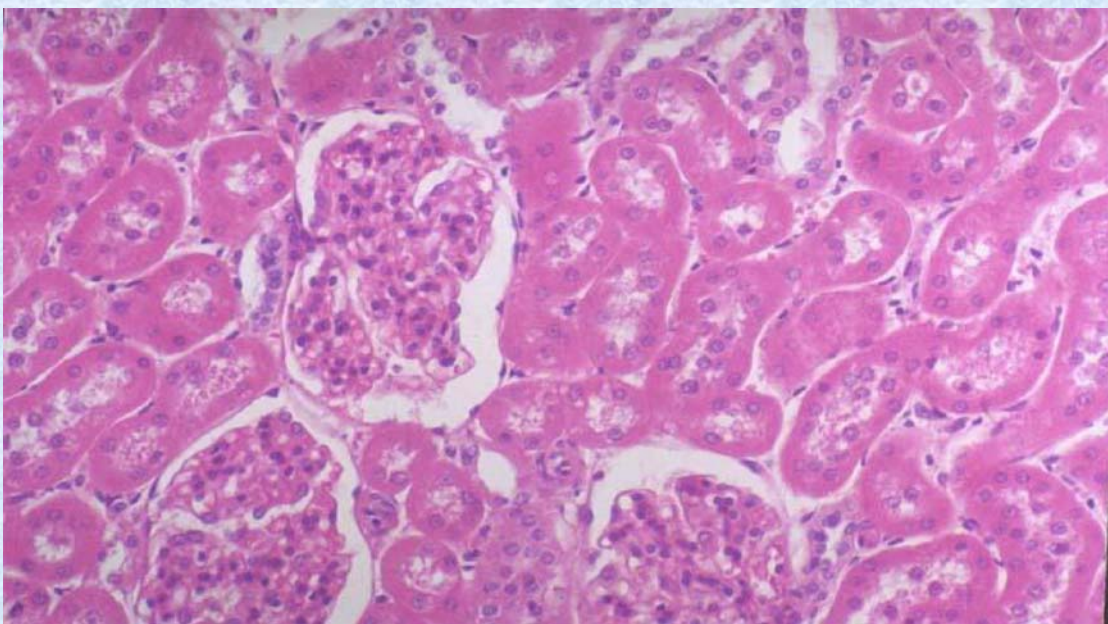
## 肝脏（肝血窦）



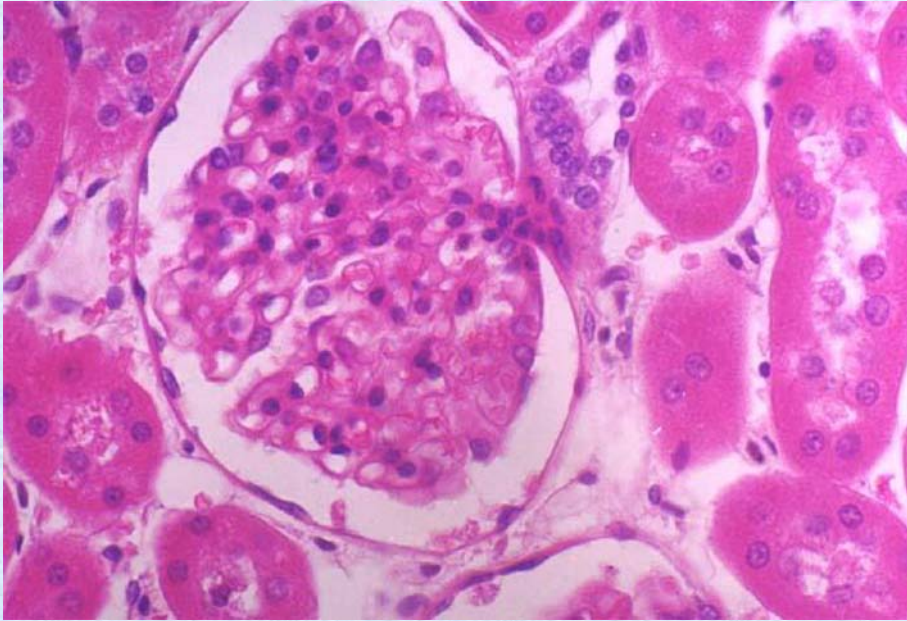
## 肝脏（门管区）



## 肾皮质



## 肾（肾小体）



## 肾（髓质）

